

Worth County, Iowa
Iowa North Zone (1401)
Horiz. Datum: NAD83(1996)
Vert. Datum: NAVD 1988
US Survey Feet
2006

Point Name: **111**

Designation: G161 Cerro Gordo Co GPS Control Monument (Set by WHKS in 2002)

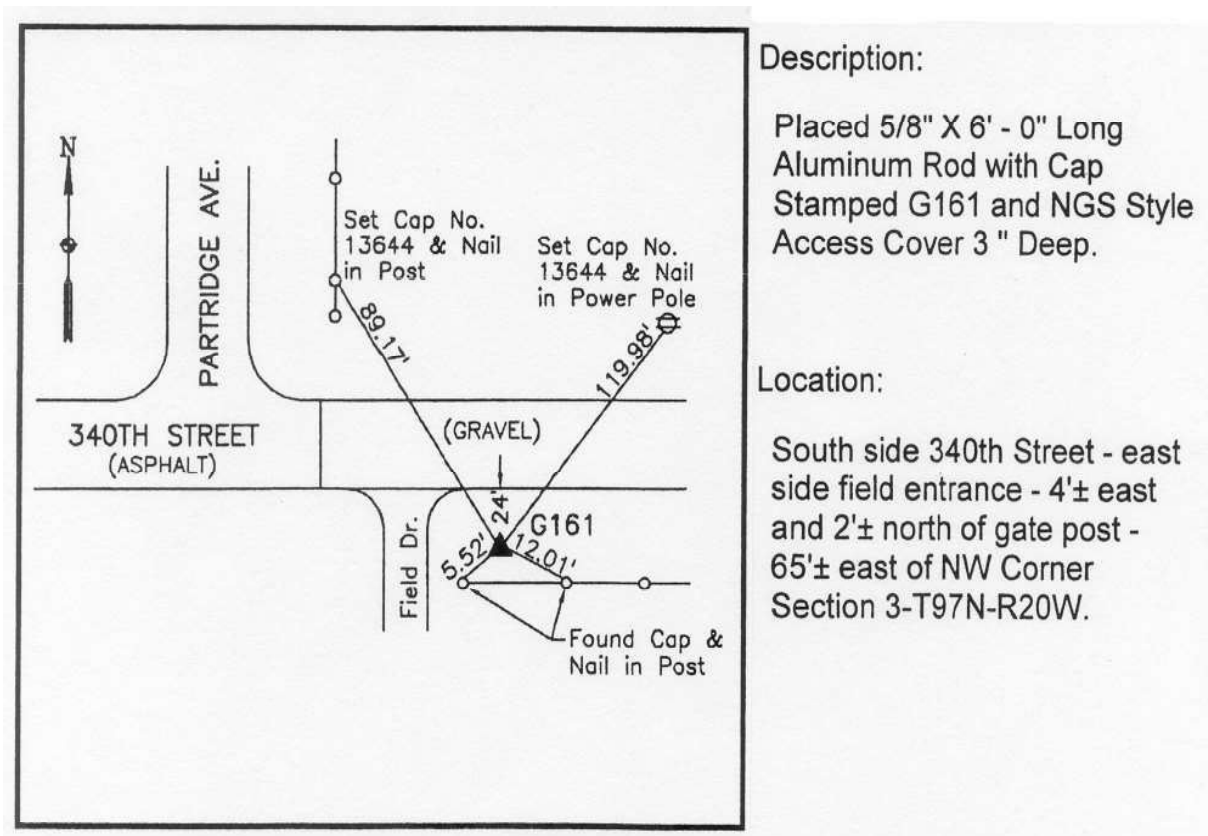
Northing: **3920539.19**sft Easting: **5000970.65**sft

Orthometric Height: **1156.00**sft Ellipsoid Height: **1062.57**sft **Geoid03**

Latitude: **43°15'17.80021"N** Longitude: **93°12'02.74443"W**

Mapping Angle: **0°12'10"** Combination Scale Factor: **0.99994718**

Monument Type: 5/8" x 6'-0" long aluminum rod with stamped cap and NGS style access cover.



This document was prepared by DCI and GBC for use by Worth County, Iowa.