

Worth County, Iowa
Iowa North Zone (1401)
Horiz. Datum: NAD83(1996)
Vert. Datum: NAVD 1988
US Survey Feet
2006

Point Name: **112**

Designation: G160 Cerro Gordo Co GPS Control Monument (Set by WHKS in 2002)

Northing: **3920639.94**sft Easting: **5017571.29**sft

Orthometric Height: **1164.85**sft Ellipsoid Height: **1070.92**sft **Geoid03**

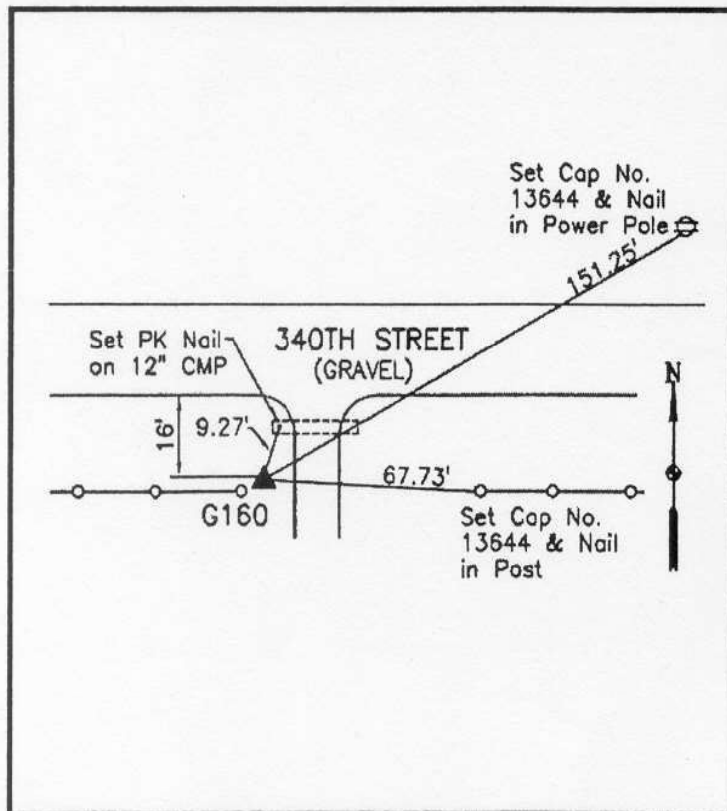
Latitude: **43°15'18.15450"N**

Longitude: **93°08'18.41865"W**

Mapping Angle: **0°14'42"**

Combination Scale Factor: **0.99994680**

Monument Type: 5/8" x 6'-0" long aluminum rod with stamped cap and NGS style access cover.



Description:

Placed 5/8" X 6' - 0" Long Aluminum Rod with Cap Stamped G160 and NGS Style Access Cover 2" Deep.

Location:

South side 340th Street - 0.25± mile east of Spruce Avenue - west side of field entrance - near NW Corner Section 6-T97N-R19W.