

Worth County, Iowa
Iowa North Zone (1401)
Horiz. Datum: NAD83(1996)
Vert. Datum: NAVD 1988
US Survey Feet
2006

Point Name: **113**

Designation: G159 Cerro Gordo Co GPS Control Monument (Set by WHKS in 2002)

Northing: **3919810.34**sft Easting: **5032216.86**sft

Orthometric Height: **1144.51**sft Ellipsoid Height: **1049.77**sft **Geoid03**

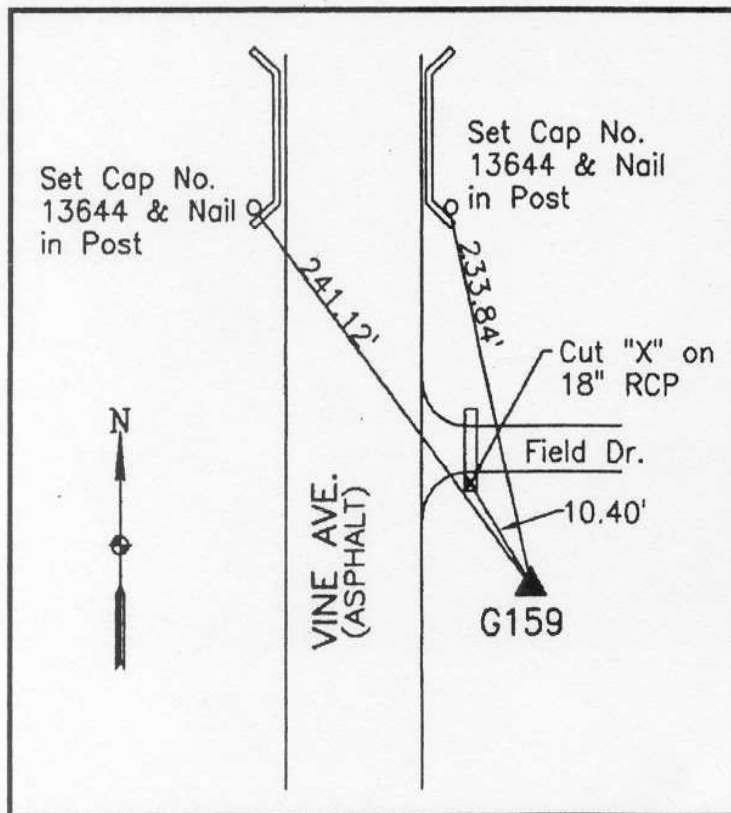
Latitude: **43°15'09.29518"N**

Longitude: **93°05'00.57253"W**

Mapping Angle: **0°16'56"**

Combination Scale Factor: **0.99994737**

Monument Type: 5/8" x 6'-0" long aluminum rod with stamped cap and NGS style access cover.



Description:

Placed 5/8" X 6' - 0" Long Aluminum Rod with Cap Stamped G159 and NGS Style Access Cover 2" Deep.

Location:

East side Vine Avenue - 0.2± mile south of 340th Street - south side of field entrance - near NW Corner Section 3-T97N-R19W.