

Worth County, Iowa
Iowa North Zone (1401)
Horiz. Datum: NAD83(1996)
Vert. Datum: NAVD 1988
US Survey Feet
2006

Point Name: **502**

Designation: 2005-502 Worth Co GPS Control Point

Northing: **3951161.83**sft Easting: **4937670.14**sft

Orthometric Height: **1250.81**sft Ellipsoid Height: **1155.00**sft **Geoid03**

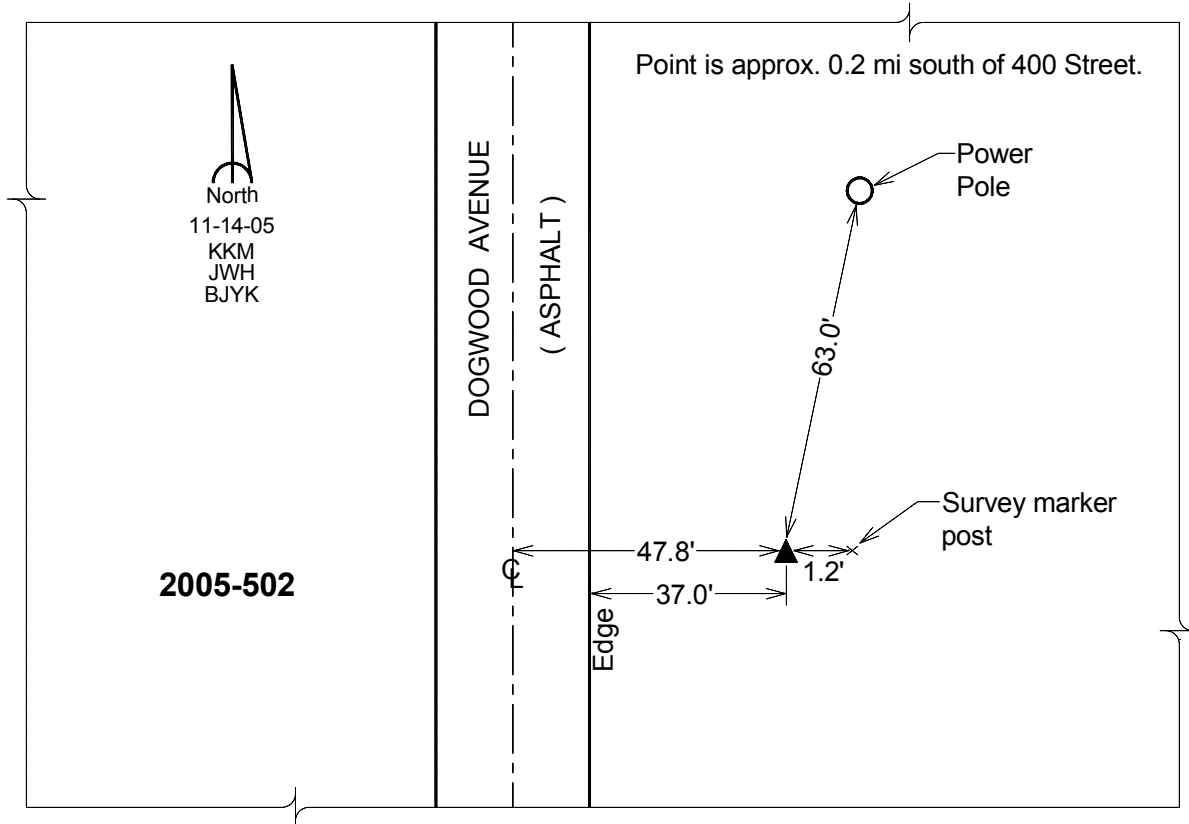
Latitude: **43°20'21.58207"N**

Longitude: **93°26'17.81368"W**

Mapping Angle: **0°02'31"**

Combination Scale Factor: **0.99995898**

Monument Type: Berntsen Top Security Rod Monument with a 2-1/2" dia. domed survey cap and permanent magnet encased in a 6" dia. PVC pipe with a NGS style aluminum access cover.



This document was prepared by DCI and GBC for use by Worth County, Iowa.