

**Worth County, Iowa**  
Iowa North Zone (1401)  
Horiz. Datum: NAD83(1996)  
Vert. Datum: NAVD 1988  
US Survey Feet  
**2006**

Point Name: **505**

**Designation:** 2005-505 Worth Co GPS Control Point

Northing: **3999659.72sft** Easting: **4937516.08sft**

Orthometric Height: **1309.11sft** Ellipsoid Height: **1212.85sft** **Geoid03**

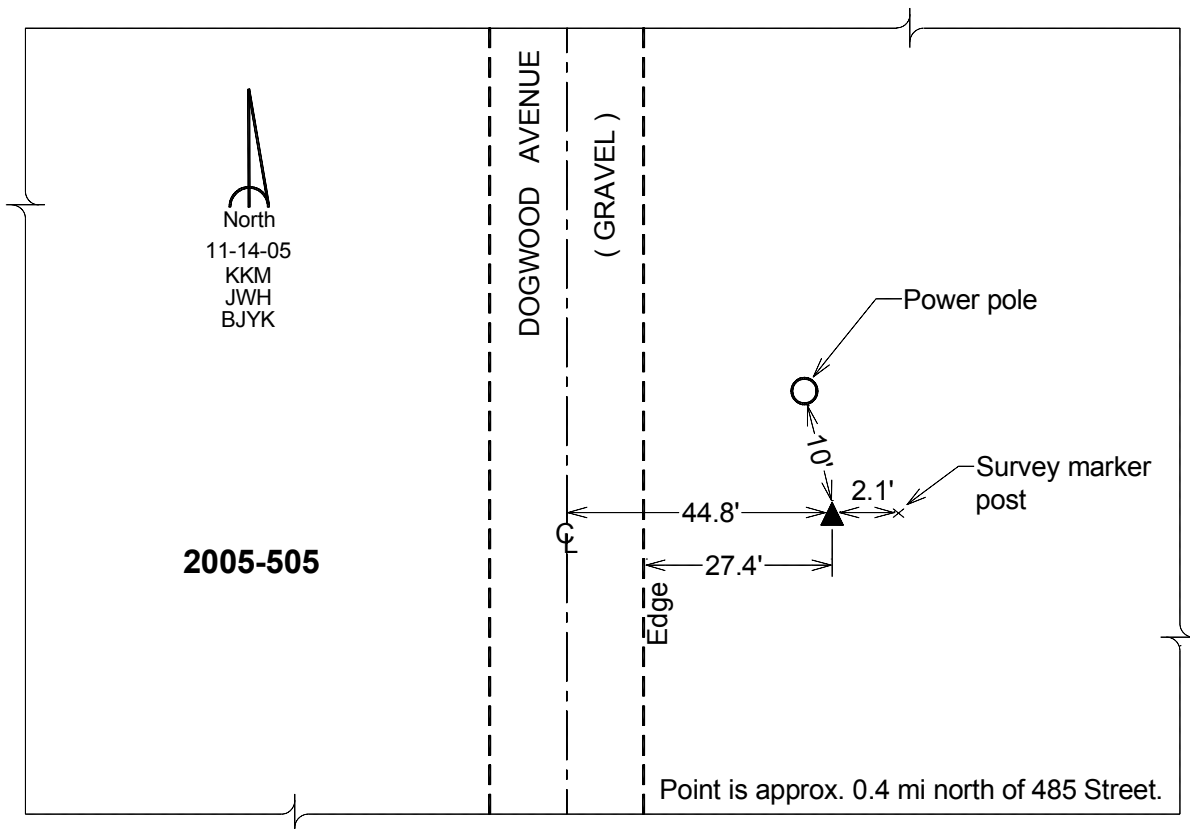
Latitude: **43°28'20.55733"N**

Longitude: **93°26'19.42261"W**

Mapping Angle: **0°02'29"**

Combination Scale Factor: **0.99998621**

**Monument Type:** Berntsen Top Security Rod Monument with a 2-1/2" dia. domed survey cap and permanent magnet encased in a 6" dia. PVC pipe with a NGS style aluminum access cover.



*This document was prepared by DCI and GBC for use by Worth County, Iowa.*