

Worth County, Iowa
 Iowa North Zone (1401)
 Horiz. Datum: NAD83(1996)
 Vert. Datum: NAVD 1988
 US Survey Feet
2006

Point Name: **506**

Designation: 2005-506 Worth Co GPS Control Point

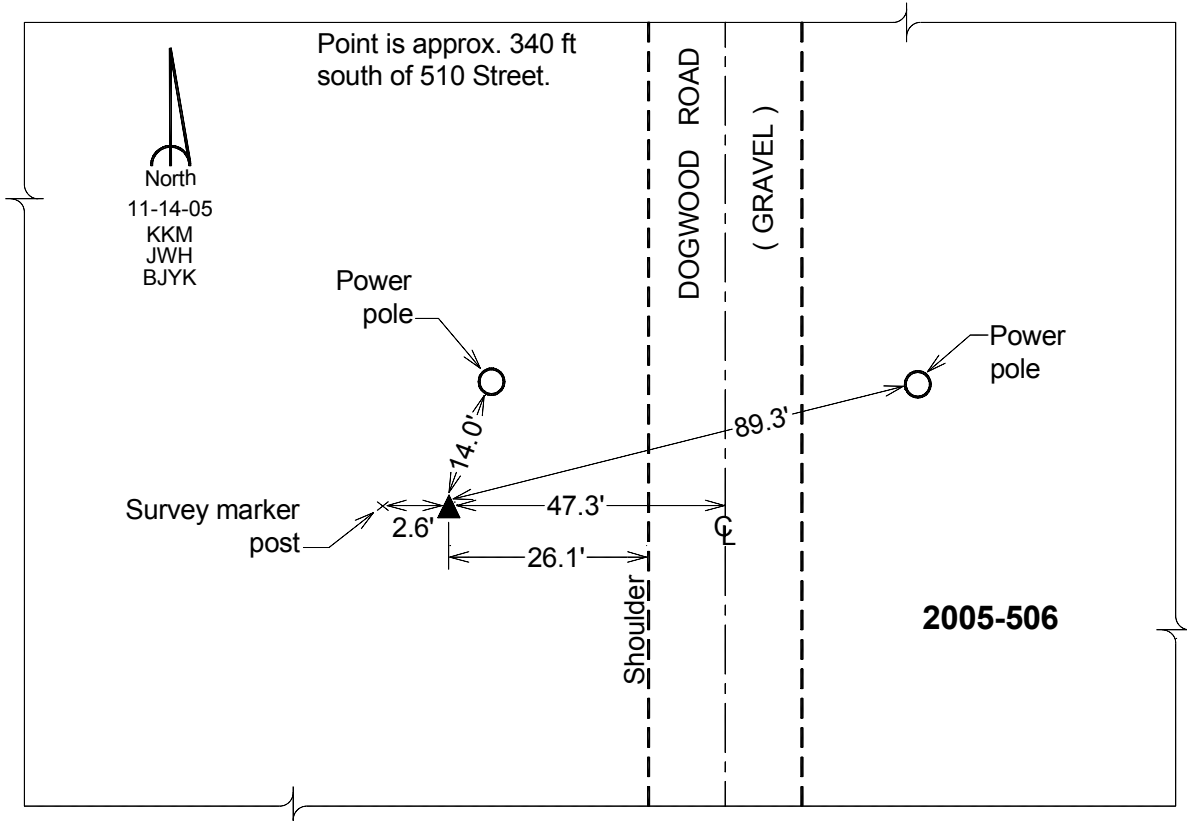
Northing: **4009120.68**sft Easting: **4937452.27**sft

Orthometric Height: **1309.08**sft Ellipsoid Height: **1212.82**sft **Geoid03**

Latitude: **43°29'53.99296"N** Longitude: **93°26'20.19527"W**

Mapping Angle: **0°02'29"** Combination Scale Factor: **0.99999270**

Monument Type: Berntsen Top Security Rod Monument with a 2-1/2" dia. domed survey cap and permanent magnet encased in a 6" dia. PVC pipe with a NGS style aluminum access cover.



This document was prepared by DCI and GBC for use by Worth County, Iowa.