

Worth County, Iowa
Iowa North Zone (1401)
Horiz. Datum: NAD83(1996)
Vert. Datum: NAVD 1988
US Survey Feet
2006

Point Name: **508**

Designation: 2005-508 Worth Co GPS Control Point

Northing: **3952404.46**sft Easting: **4953414.99**sft

Orthometric Height: **1248.94**sft Ellipsoid Height: **1153.68**sft **Geoid03**

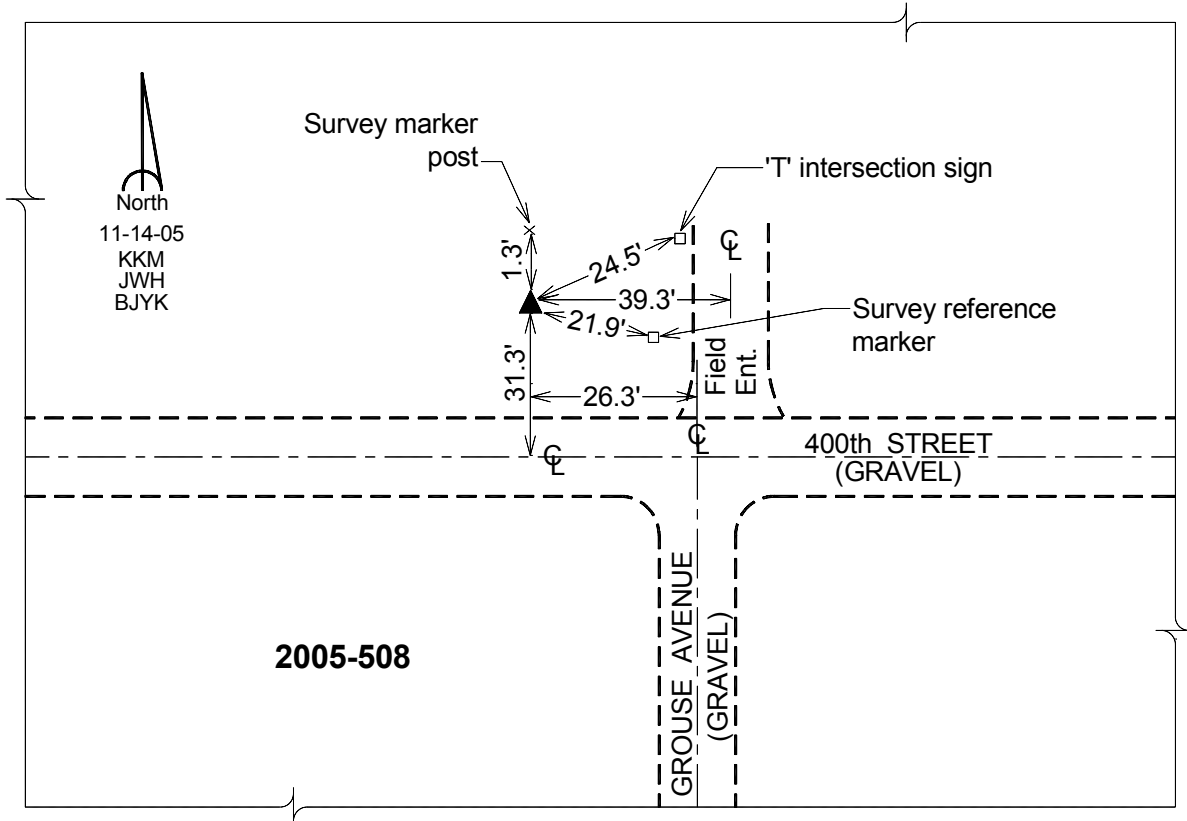
Latitude: **43°20'33.68689"N**

Longitude: **93°22'44.74096"W**

Mapping Angle: **0°04'55"**

Combination Scale Factor: **0.99995973**

Monument Type: Berntsen Top Security Rod Monument with a 2-1/2" dia. domed survey cap and permanent magnet encased in a 6" dia. PVC pipe with a NGS style aluminum access cover.



This document was prepared by DCI and GBC for use by Worth County, Iowa.