

**Worth County, Iowa**  
 Iowa North Zone (1401)  
 Horiz. Datum: NAD83(1996)  
 Vert. Datum: NAVD 1988  
 US Survey Feet  
**2006**

Point Name: **510**

**Designation:** 2005-510 Worth Co GPS Control Point

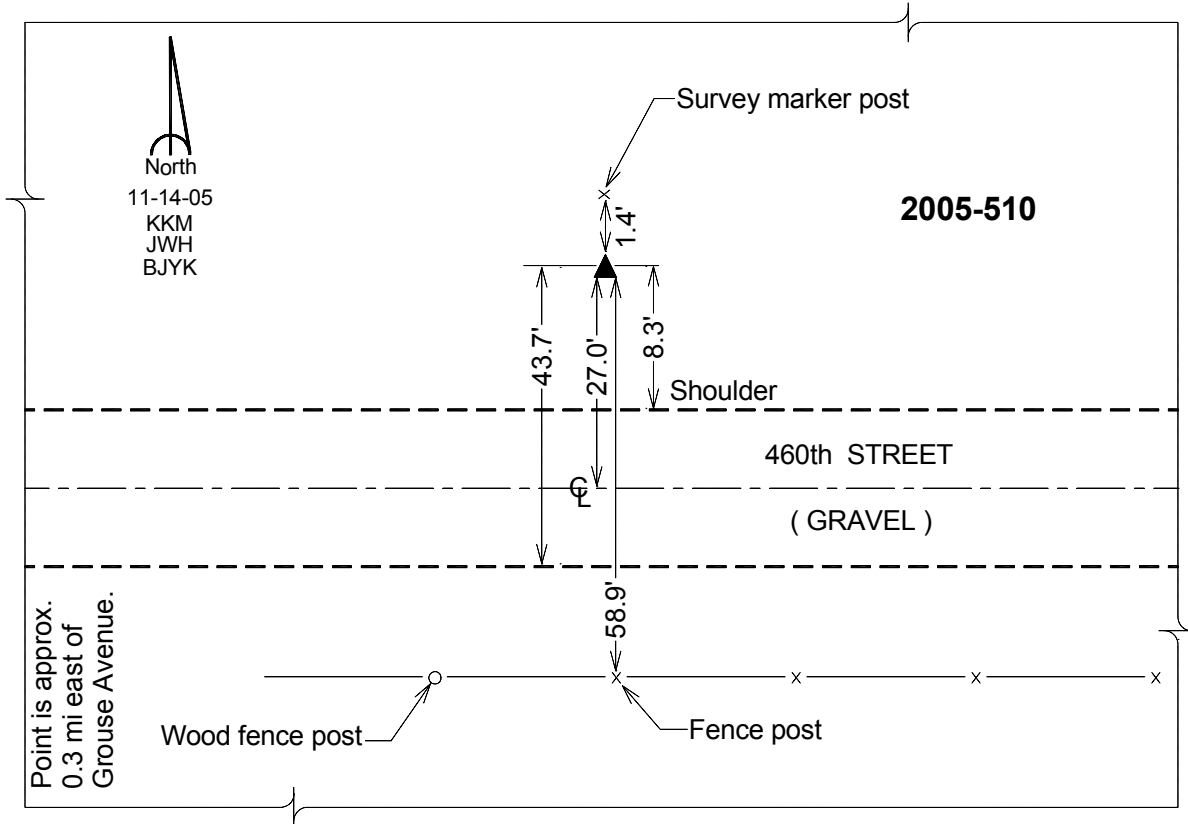
Northing: **3984219.17sft** Easting: **4954974.33sft**

Orthometric Height: **1265.42sft** Ellipsoid Height: **1169.66sft** **Geoid03**

Latitude: **43°25'47.87449"N** Longitude: **93°22'22.99349"W**

Mapping Angle: **0°05'10"** Combination Scale Factor: **0.99997812**

**Monument Type:** Berntsen Top Security Rod Monument with a 2-1/2" dia. domed survey cap and permanent magnet encased in a 6" dia. PVC pipe with a NGS style aluminum access cover.



*This document was prepared by DCI and GBC for use by Worth County, Iowa.*