

Worth County, Iowa
Iowa North Zone (1401)
Horiz. Datum: NAD83(1996)
Vert. Datum: NAVD 1988
US Survey Feet
2006

Point Name: **515**

Designation: 2005-515 Worth Co GPS Control Point

Northing: **3968168.15**sft Easting: **4969583.70**sft

Orthometric Height: **1213.38**sft Ellipsoid Height: **1118.37**sft **Geoid03**

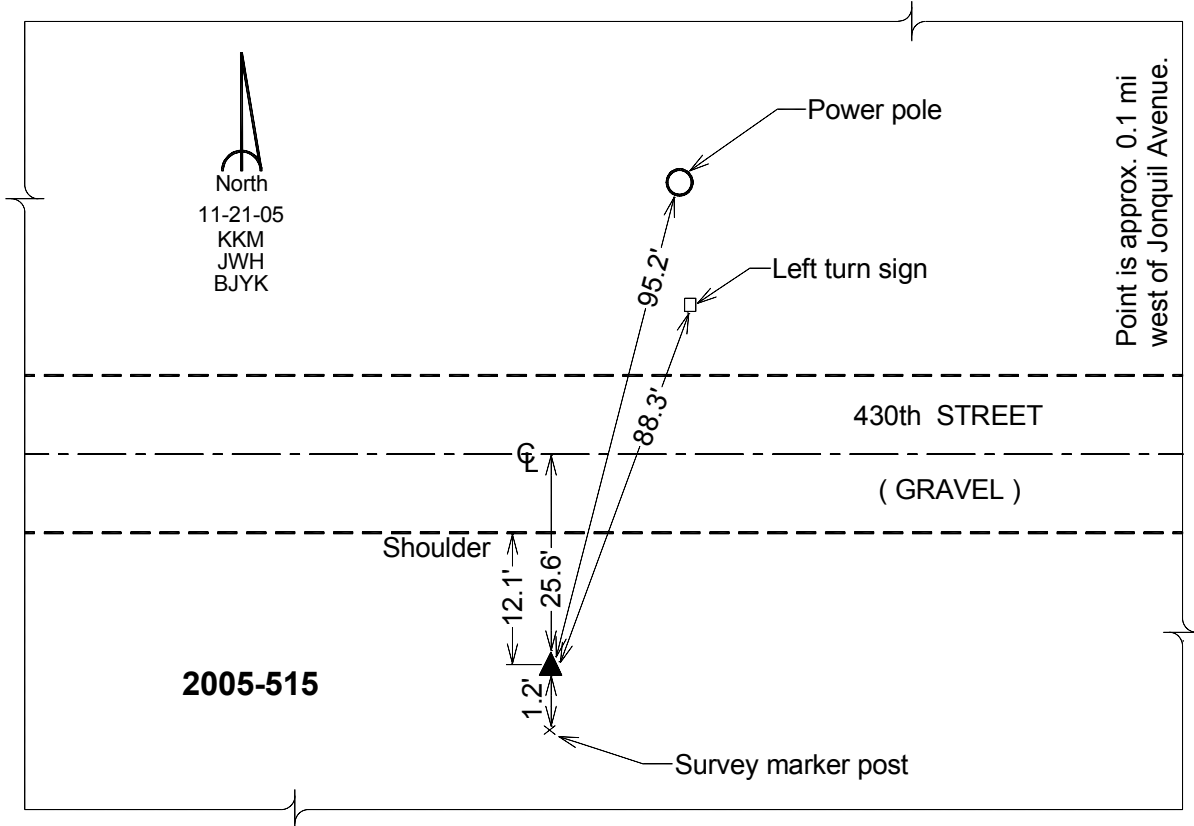
Latitude: **43°23'09.08847"N**

Longitude: **93°19'05.48664"W**

Mapping Angle: **0°07'24"**

Combination Scale Factor: **0.99997060**

Monument Type: Berntsen Top Security Rod Monument with a 2-1/2" dia. domed survey cap and permanent magnet encased in a 6" dia. PVC pipe with a NGS style aluminum access cover.



This document was prepared by DCI and GBC for use by Worth County, Iowa.