

**Worth County, Iowa**  
 Iowa North Zone (1401)  
 Horiz. Datum: NAD83(1996)  
 Vert. Datum: NAVD 1988  
 US Survey Feet  
**2006**

Point Name: **516**

**Designation:** 2005-516 Worth Co GPS Control Point

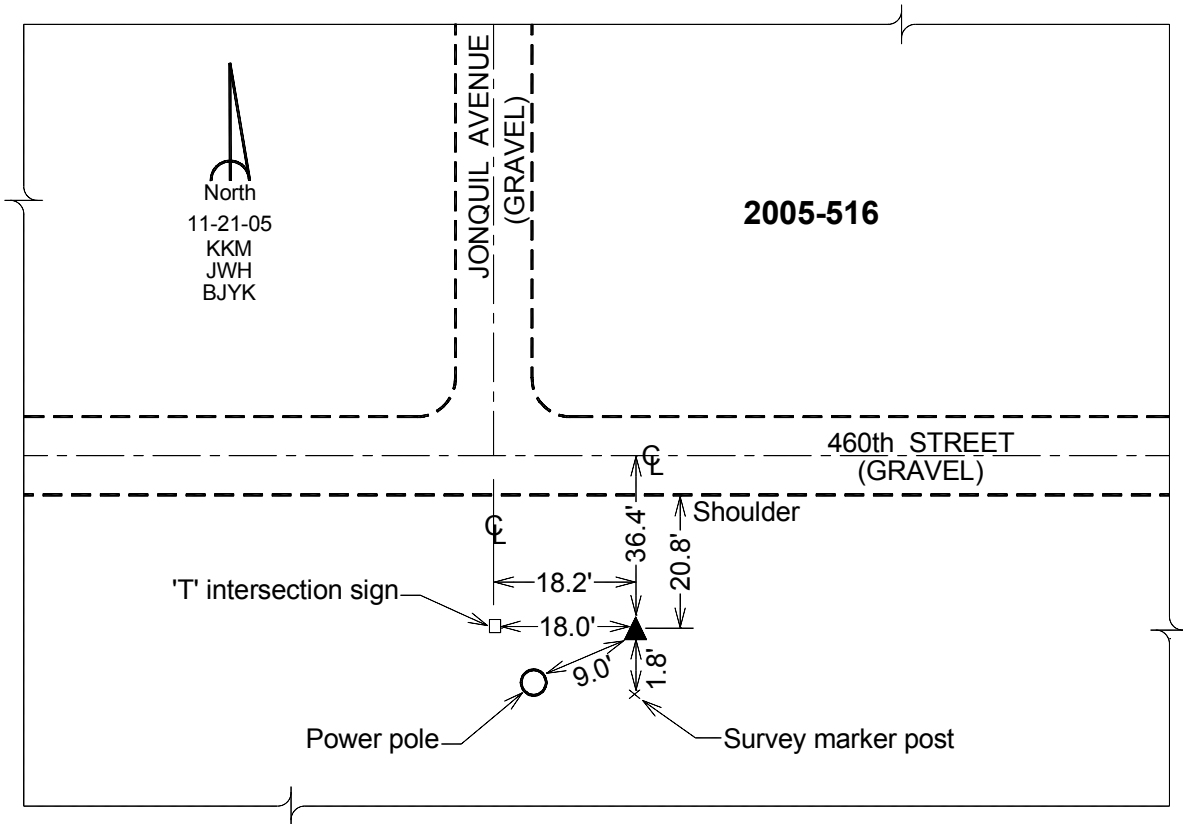
Northing: **3984162.33sft** Easting: **4968951.15sft**

Orthometric Height: **1247.24sft** Ellipsoid Height: **1151.94sft** **Geoid03**

Latitude: **43°25'47.06296"N** Longitude: **93°19'13.59227"W**

Mapping Angle: **0°07'18"** Combination Scale Factor: **0.99997892**

**Monument Type:** Berntsen Top Security Rod Monument with a 2-1/2" dia. domed survey cap and permanent magnet encased in a 6" dia. PVC pipe with a NGS style aluminum access cover.



*This document was prepared by DCI and GBC for use by Worth County, Iowa.*