

**Worth County, Iowa**  
Iowa North Zone (1401)  
Horiz. Datum: NAD83(1996)  
Vert. Datum: NAVD 1988  
US Survey Feet  
**2006**

Point Name: **520**

**Designation:** 2005-520 Worth Co GPS Control Point

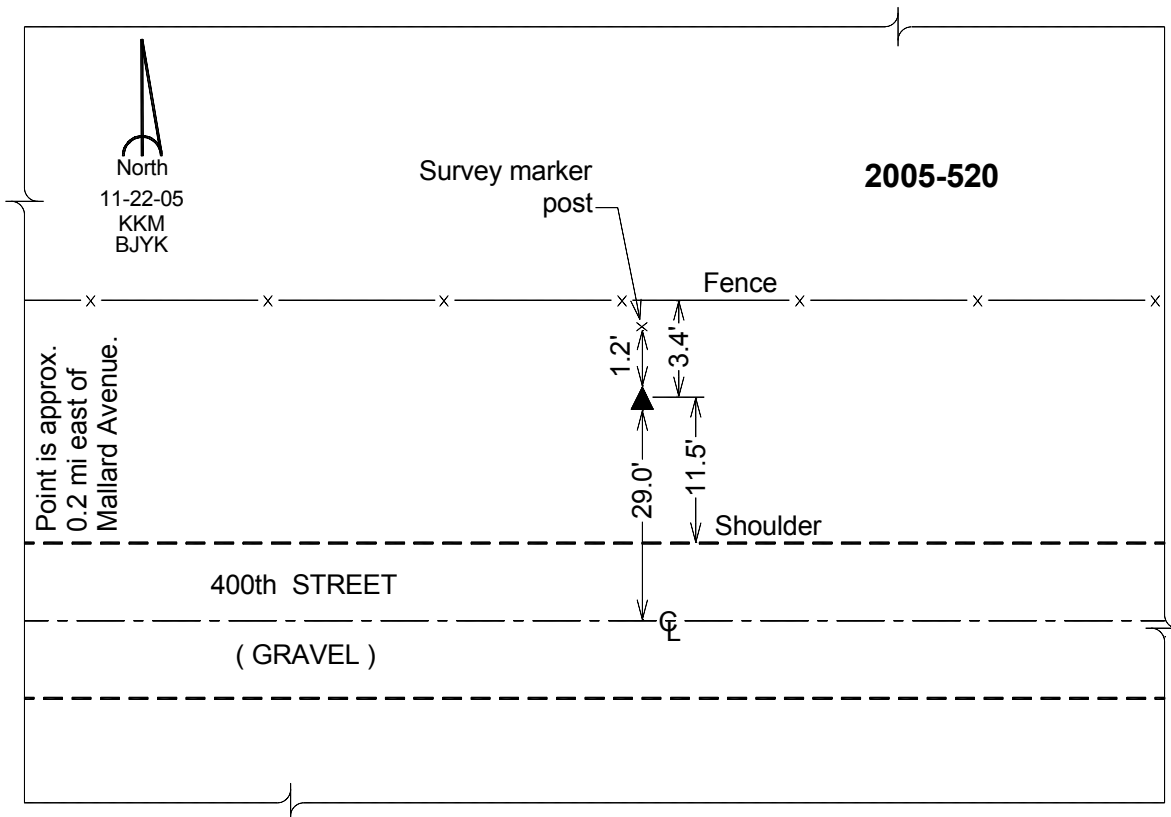
Northing: **3952495.20**sft Easting: **4985973.81**sft

Orthometric Height: **1216.71**sft Ellipsoid Height: **1122.60**sft **Geoid03**

Latitude: **43°20'33.89043"N** Longitude: **93°15'24.15104"W**

Mapping Angle: **0°09'54"** Combination Scale Factor: **0.99996123**

**Monument Type:** Berntsen Top Security Rod Monument with a 2-1/2" dia. domed survey cap and permanent magnet encased in a 6" dia. PVC pipe with a NGS style aluminum access cover.



*This document was prepared by DCI and GBC for use by Worth County, Iowa.*