

**Worth County, Iowa**  
 Iowa North Zone (1401)  
 Horiz. Datum: NAD83(1996)  
 Vert. Datum: NAVD 1988  
 US Survey Feet  
**2006**

Point Name: **522**

**Designation:** 2005-522 Worth Co GPS Control Point

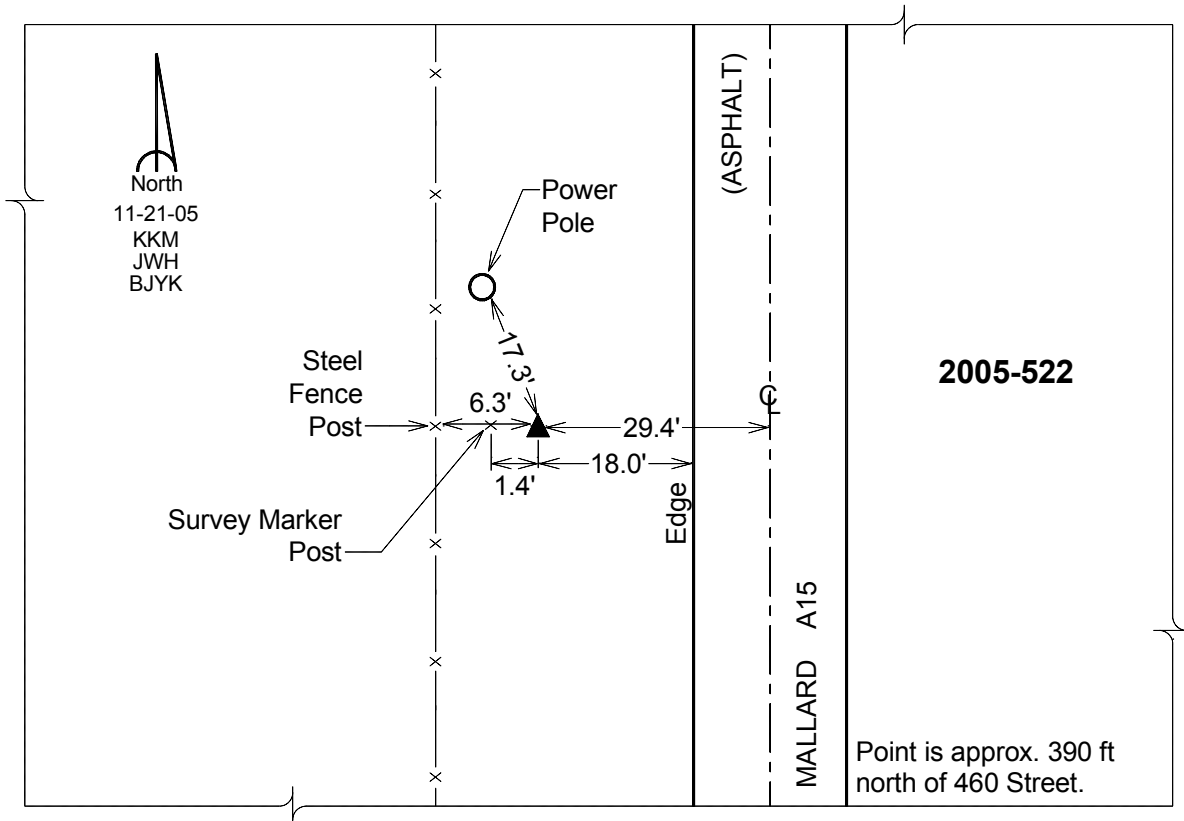
Northing: **3984601.87**sft Easting: **4984735.03**sft

Orthometric Height: **1257.66**sft Ellipsoid Height: **1162.88**sft **Geoid03**

Latitude: **43°25'51.01798"N** Longitude: **93°15'39.68598"W**

Mapping Angle: **0°09'43"** Combination Scale Factor: **0.99997865**

**Monument Type:** Berntsen Top Security Rod Monument with a 2-1/2" dia. domed survey cap and permanent magnet encased in a 6" dia. PVC pipe with a NGS style aluminum access cover.



*This document was prepared by DCI and GBC for use by Worth County, Iowa.*