

Worth County, Iowa
Iowa North Zone (1401)
Horiz. Datum: NAD83(1996)
Vert. Datum: NAVD 1988
US Survey Feet
2006

Point Name: **525**

Designation: 2005-525 Worth Co GPS Control Point

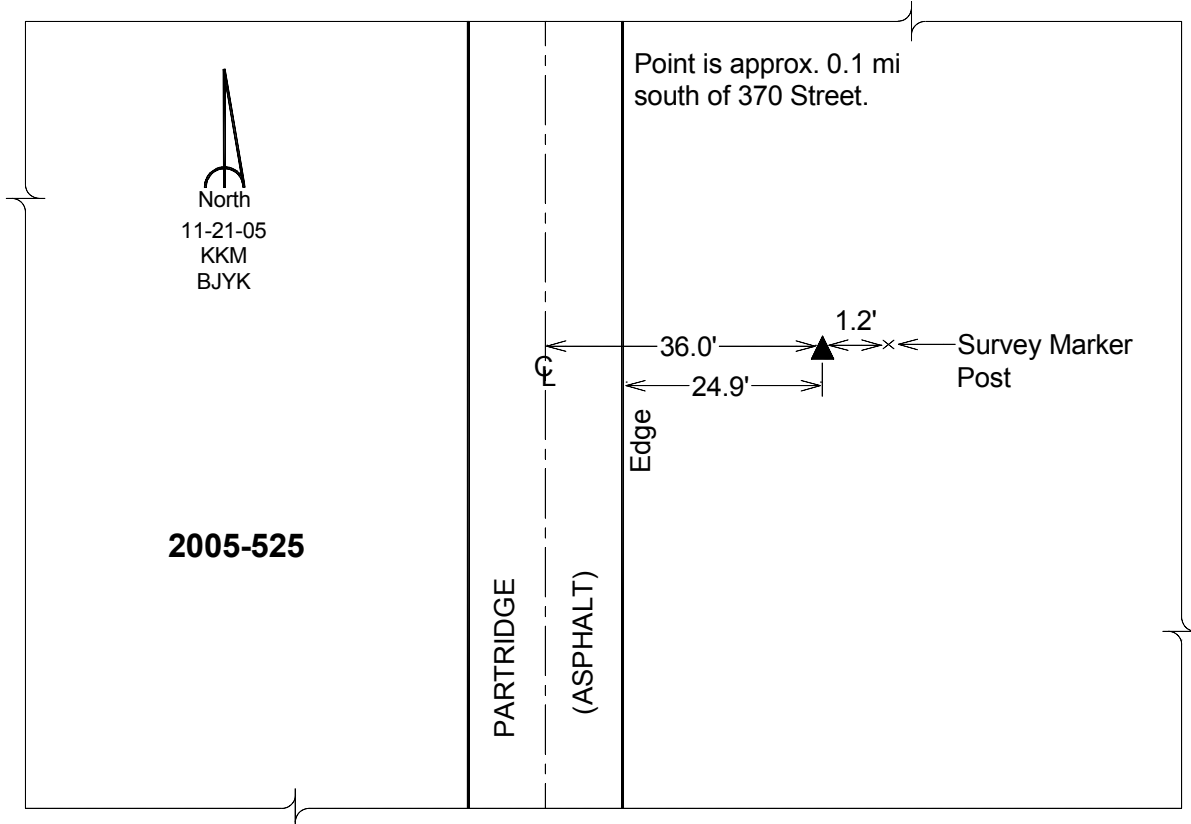
Northing: **3935824.93**sft Easting: **5000825.22**sft

Orthometric Height: **1175.76**sft Ellipsoid Height: **1082.14**sft **Geoid03**

Latitude: **43°17'48.77670"N** Longitude: **93°12'03.97935"W**

Mapping Angle: **0°12'09"** Combination Scale Factor: **0.99995403**

Monument Type: Berntsen Top Security Rod Monument with a 2-1/2" dia. domed survey cap and permanent magnet encased in a 6" dia. PVC pipe with a NGS style aluminum access cover.



This document was prepared by DCI and GBC for use by Worth County, Iowa.