

Worth County, Iowa
Iowa North Zone (1401)
Horiz. Datum: NAD83(1996)
Vert. Datum: NAVD 1988
US Survey Feet
2006

Point Name: **526**

Designation: 2005-526 Worth Co GPS Control Point

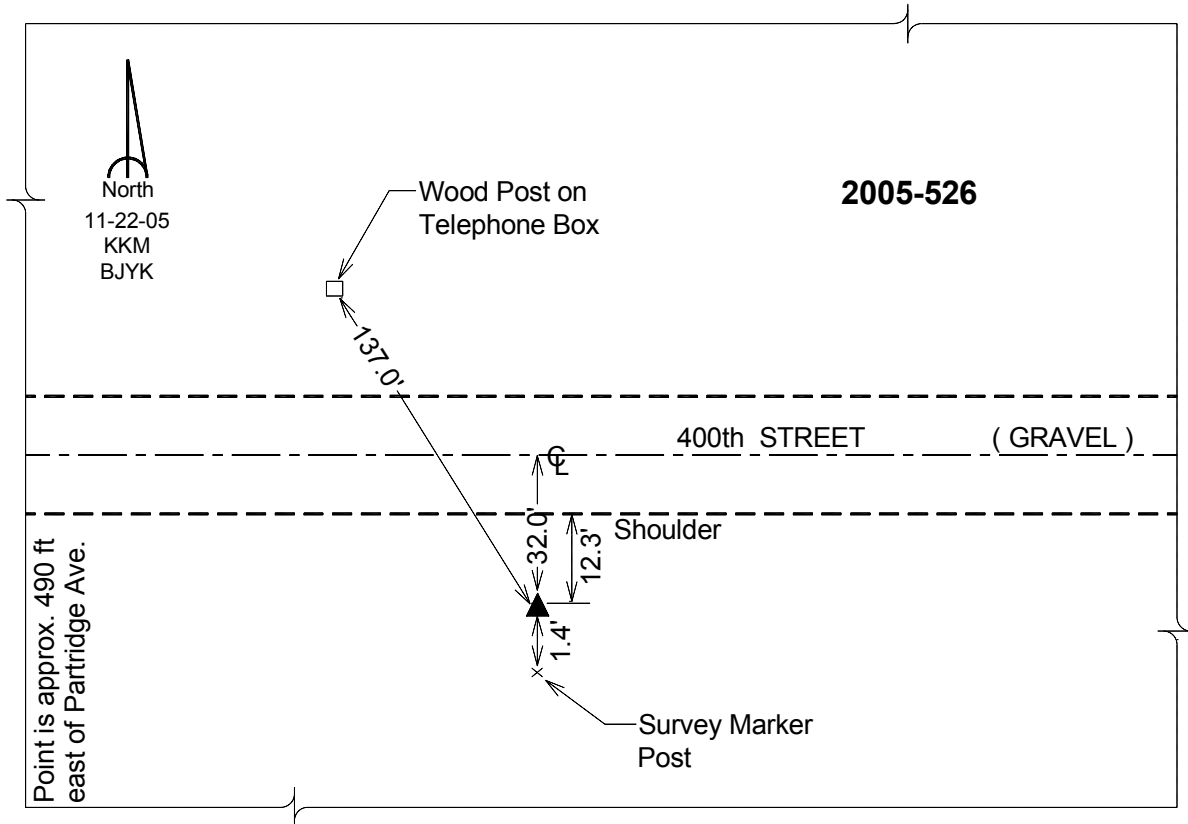
Northing: **3952412.98sft** Easting: **5001299.42sft**

Orthometric Height: **1218.57sft** Ellipsoid Height: **1124.70sft** **Geoid03**

Latitude: **43°20'32.59124"N** Longitude: **93°11'56.76890"W**

Mapping Angle: **0°12'14"** Combination Scale Factor: **0.99996105**

Monument Type: Berntsen Top Security Rod Monument with a 2-1/2" dia. domed survey cap and permanent magnet encased in a 6" dia. PVC pipe with a NGS style aluminum access cover.



This document was prepared by DCI and GBC for use by Worth County, Iowa.