

Worth County, Iowa
Iowa North Zone (1401)
Horiz. Datum: NAD83(1996)
Vert. Datum: NAVD 1988
US Survey Feet
2006

Point Name: **528**

Designation: 2005-528 Worth Co GPS Control Point

Northing: **3983540.17sft** Easting: **5004450.78sft**

Orthometric Height: **1213.55sft** Ellipsoid Height: **1119.24sft** **Geoid03**

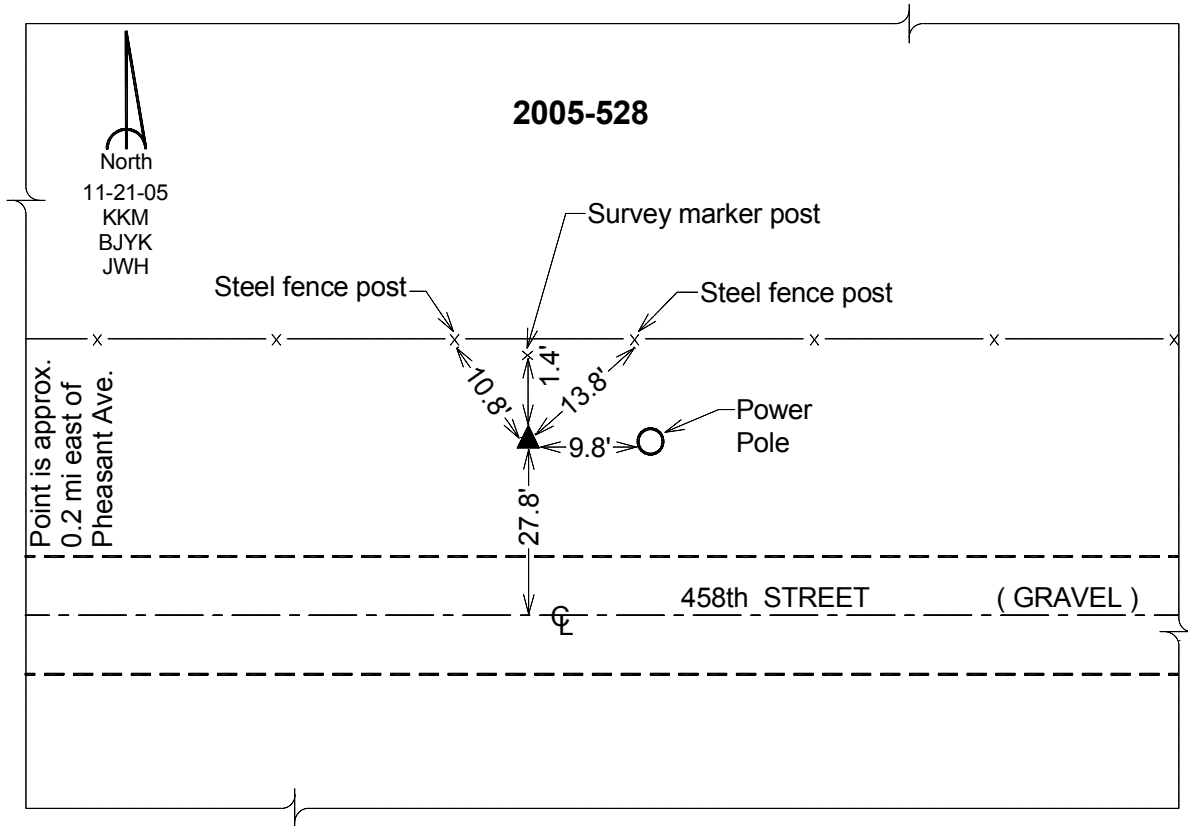
Latitude: **43°25'39.89667"N**

Longitude: **93°11'12.56453"W**

Mapping Angle: **0°12'44"**

Combination Scale Factor: **0.99998001**

Monument Type: Berntsen Top Security Rod Monument with a 2-1/2" dia. domed survey cap and permanent magnet encased in a 6" dia. PVC pipe with a NGS style aluminum access cover.



This document was prepared by DCI and GBC for use by Worth County, Iowa.