

**Worth County, Iowa**  
Iowa North Zone (1401)  
Horiz. Datum: NAD83(1996)  
Vert. Datum: NAVD 1988  
US Survey Feet  
**2006**

Point Name: **529**

**Designation:** 2005-529 Worth Co GPS Control Point

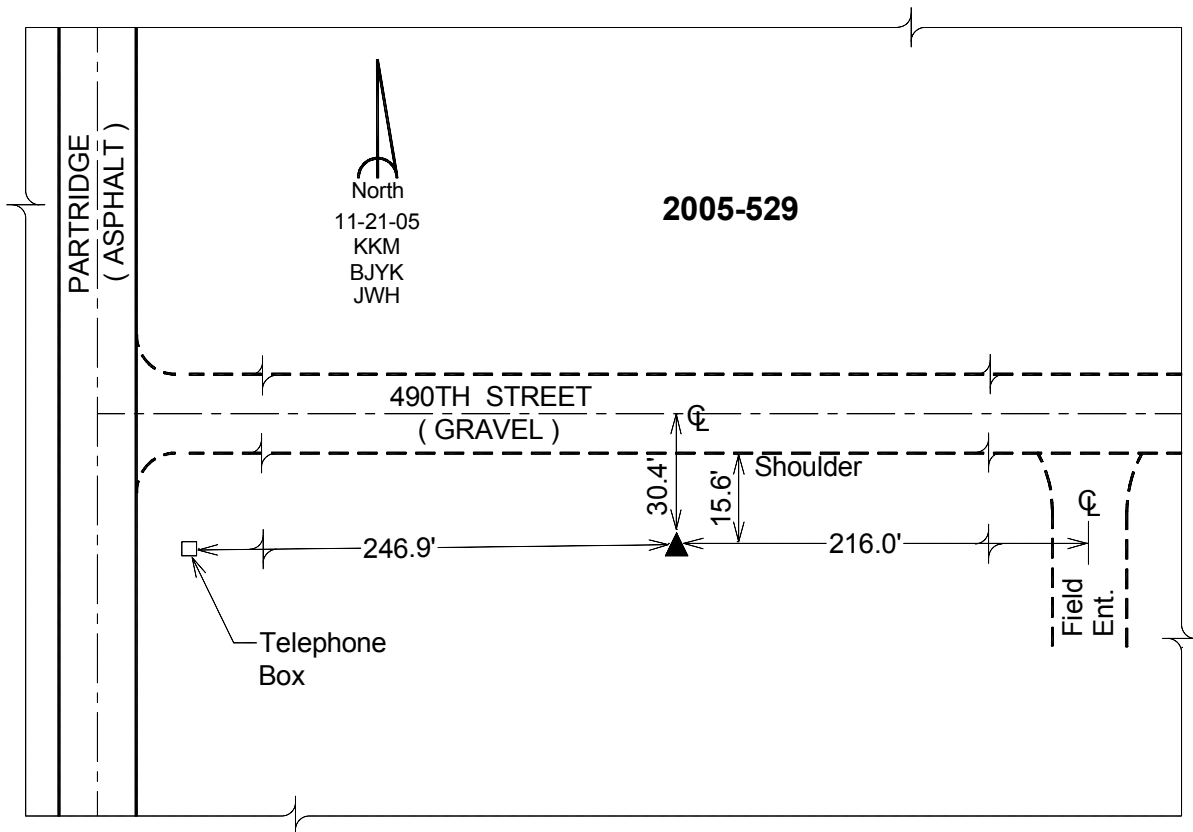
Northing: **3999964.51**sft Easting: **5000898.10**sft

Orthometric Height: **1232.40**sft Ellipsoid Height: **1137.88**sft **Geoid03**

Latitude: **43°28'22.22981"N** Longitude: **93°11'59.91582"W**

Mapping Angle: **0°12'12"** Combination Scale Factor: **0.99998990**

**Monument Type:** Berntsen Top Security Rod Monument with a 2-1/2" dia. domed survey cap and permanent magnet encased in a 6" dia. PVC pipe with a NGS style aluminum access cover.



*This document was prepared by DCI and GBC for use by Worth County, Iowa.*