

**Worth County, Iowa**  
Iowa North Zone (1401)  
Horiz. Datum: NAD83(1996)  
Vert. Datum: NAVD 1988  
US Survey Feet  
**2006**

Point Name: **532**

**Designation:** 2005-532 Worth Co GPS Control Point

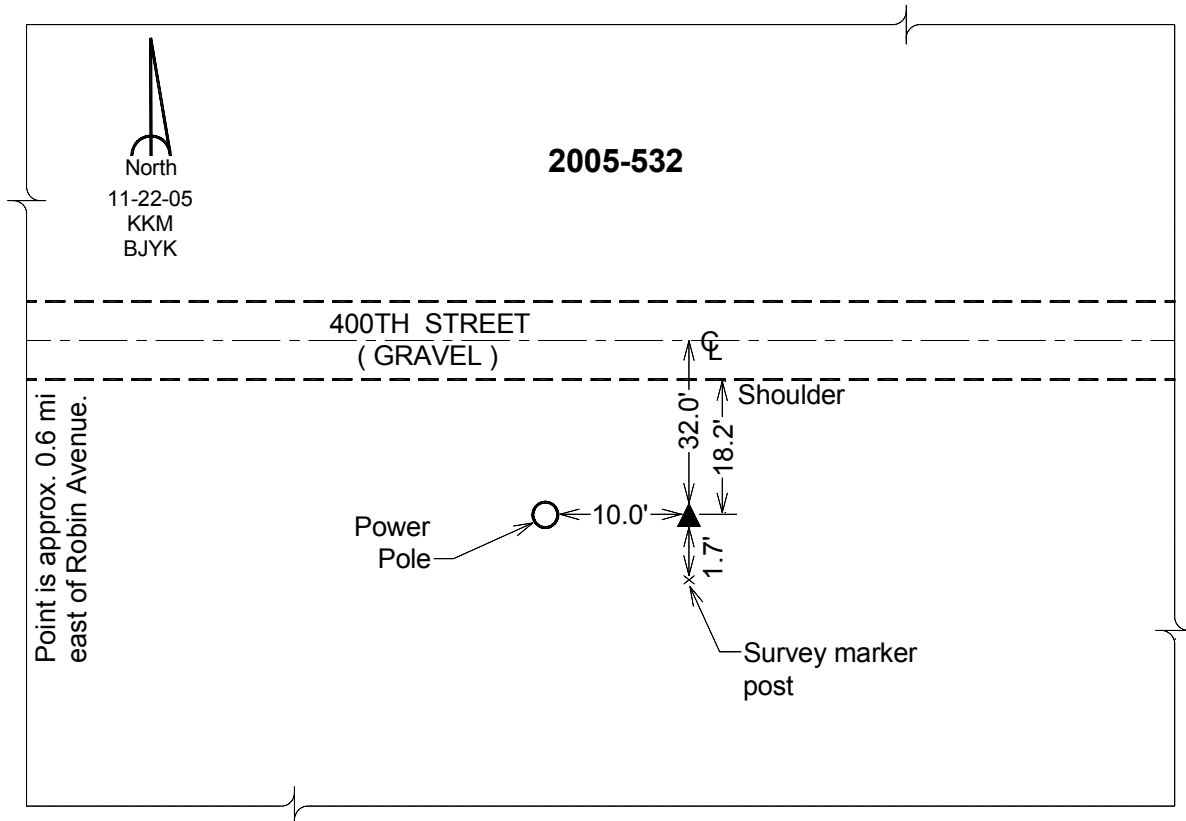
Northing: **3952416.56sft** Easting: **5017395.03sft**

Orthometric Height: **1184.71sft** Ellipsoid Height: **1090.72sft** **Geoid03**

Latitude: **43°20'32.00387"N** Longitude: **93°08'18.96474"W**

Mapping Angle: **0°14'42"** Combination Scale Factor: **0.99996264**

**Monument Type:** Berntsen Top Security Rod Monument with a 2-1/2" dia. domed survey cap and permanent magnet encased in a 6" dia. PVC pipe with a NGS style aluminum access cover.



*This document was prepared by DCI and GBC for use by Worth County, Iowa.*