

**Worth County, Iowa**  
Iowa North Zone (1401)  
Horiz. Datum: NAD83(1996)  
Vert. Datum: NAVD 1988  
US Survey Feet  
**2006**

Point Name: **533**

**Designation:** 2005-533 Worth Co GPS Control Point

Northing: **3968295.07**sft Easting: **5016192.59**sft

Orthometric Height: **1222.73**sft Ellipsoid Height: **1128.67**sft **Geoid03**

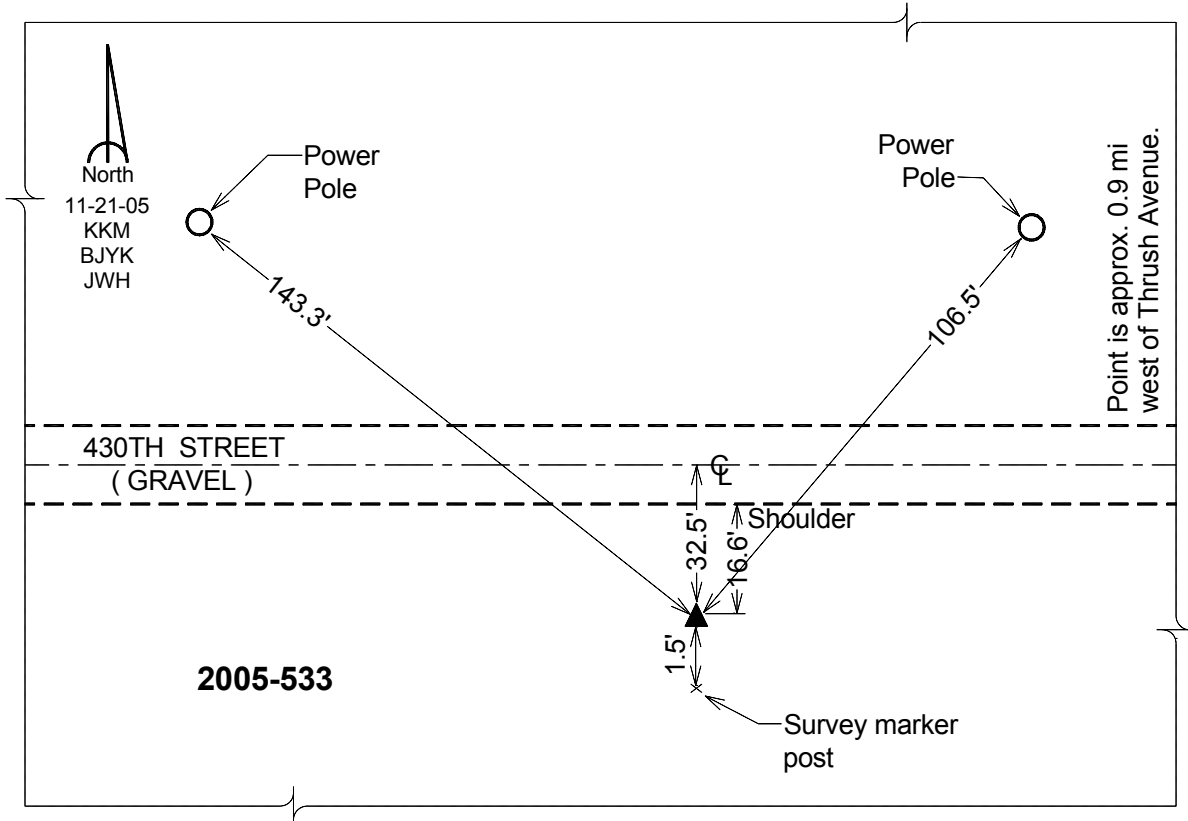
Latitude: **43°23'08.87475"N**

Longitude: **93°08'34.32836"W**

Mapping Angle: **0°14'31"**

Combination Scale Factor: **0.99997009**

**Monument Type:** Berntsen Top Security Rod Monument with a 2-1/2" dia. domed survey cap and permanent magnet encased in a 6" dia. PVC pipe with a NGS style aluminum access cover.



*This document was prepared by DCI and GBC for use by Worth County, Iowa.*