

Worth County, Iowa
 Iowa North Zone (1401)
 Horiz. Datum: NAD83(1996)
 Vert. Datum: NAVD 1988
 US Survey Feet
2006

Point Name: **535**

Designation: 2005-535 Worth Co GPS Control Point

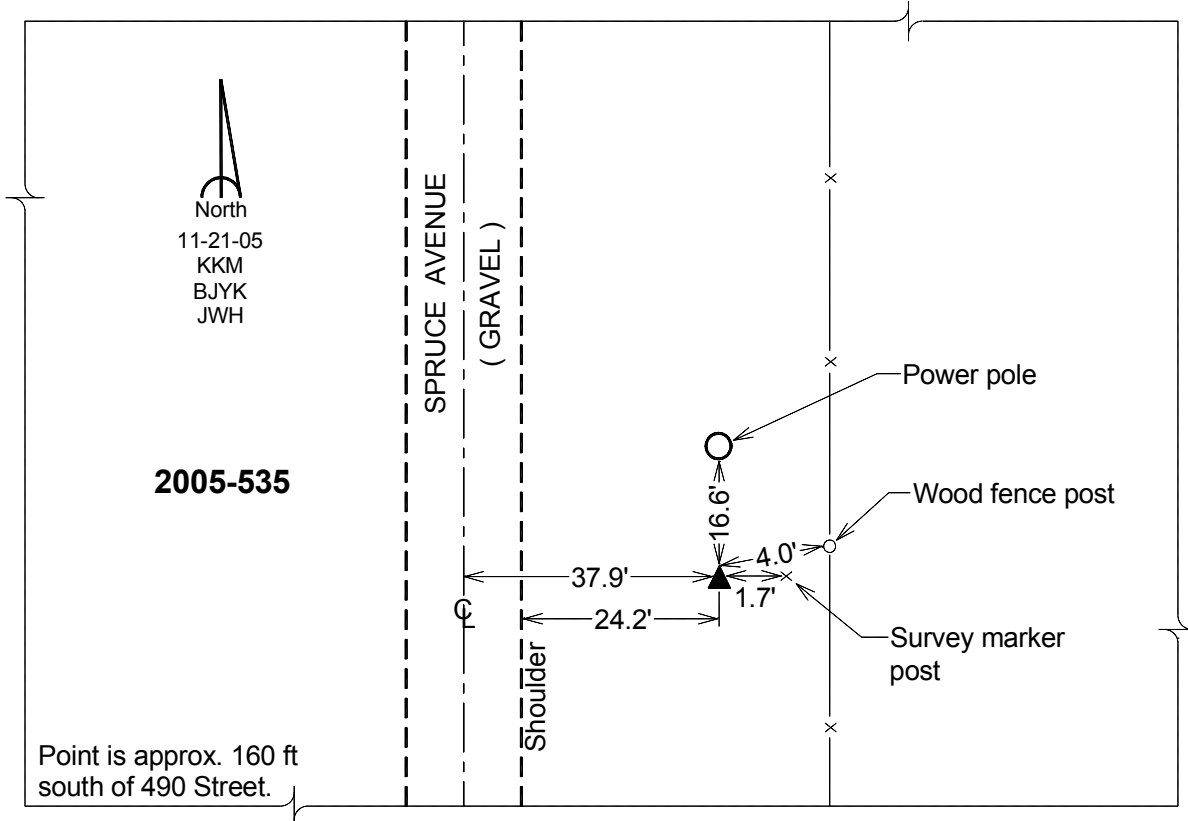
Northing: **3999918.10**sft Easting: **5016557.86**sft

Orthometric Height: **1218.56**sft Ellipsoid Height: **1124.29**sft **Geoid03**

Latitude: **43°28'21.16869"N** Longitude: **93°08'27.56348"W**

Mapping Angle: **0°14'36"** Combination Scale Factor: **0.99999048**

Monument Type: Berntsen Top Security Rod Monument with a 2-1/2" dia. domed survey cap and permanent magnet encased in a 6" dia. PVC pipe with a NGS style aluminum access cover.



This document was prepared by DCI and GBC for use by Worth County, Iowa.