

**Worth County, Iowa**  
Iowa North Zone (1401)  
Horiz. Datum: NAD83(1996)  
Vert. Datum: NAVD 1988  
US Survey Feet  
**2006**

Point Name: **536**

**Designation:** 2005-536 Worth Co GPS Control Point

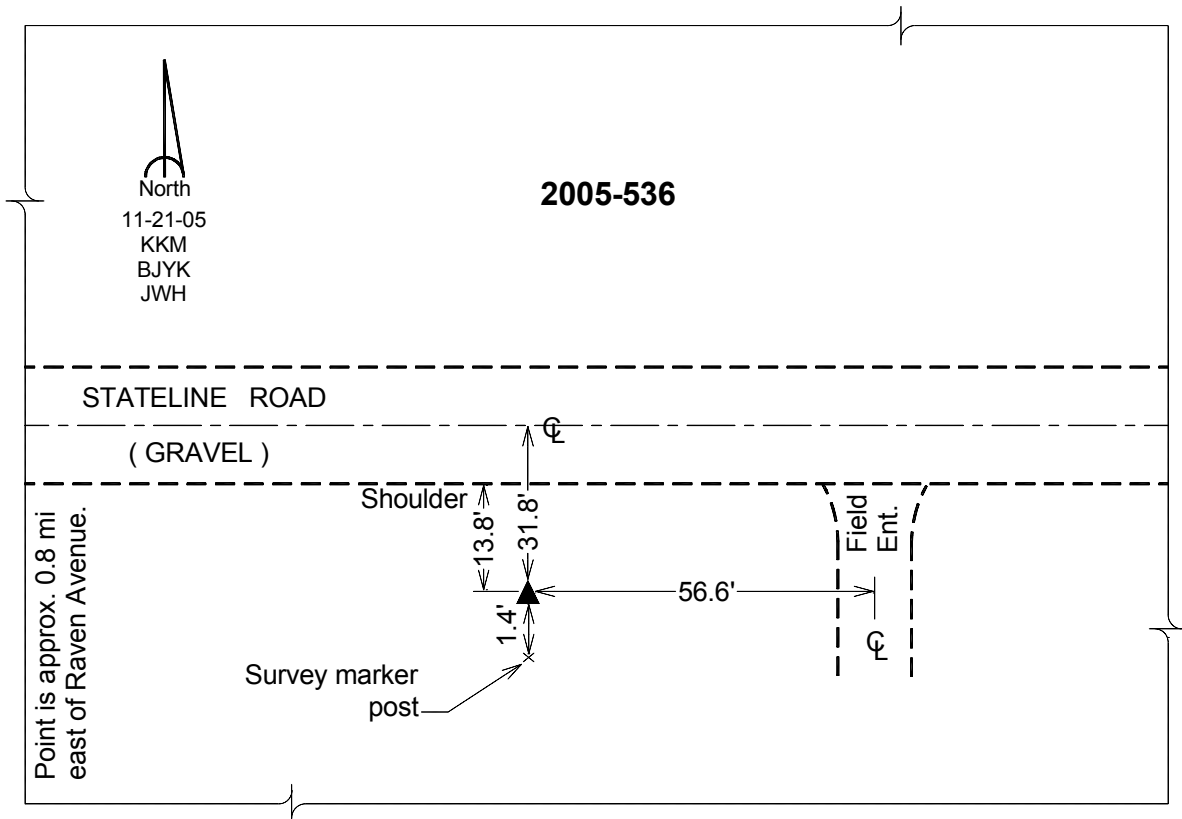
Northing: **4009744.73sft** Easting: **5015392.70sft**

Orthometric Height: **1235.53sft** Ellipsoid Height: **1141.24sft** **Geoid03**

Latitude: **43°29'58.26286"N** Longitude: **93°08'42.80440"W**

Mapping Angle: **0°14'26"** Combination Scale Factor: **0.99999642**

**Monument Type:** Berntsen Top Security Rod Monument with a 2-1/2" dia. domed survey cap and permanent magnet encased in a 6" dia. PVC pipe with a NGS style aluminum access cover.



*This document was prepared by DCI and GBC for use by Worth County, Iowa.*