

**Worth County, Iowa**  
 Iowa North Zone (1401)  
 Horiz. Datum: NAD83(1996)  
 Vert. Datum: NAVD 1988  
 US Survey Feet  
**2006**

Point Name: **538**

**Designation:** 2005-538 Worth Co GPS Control Point

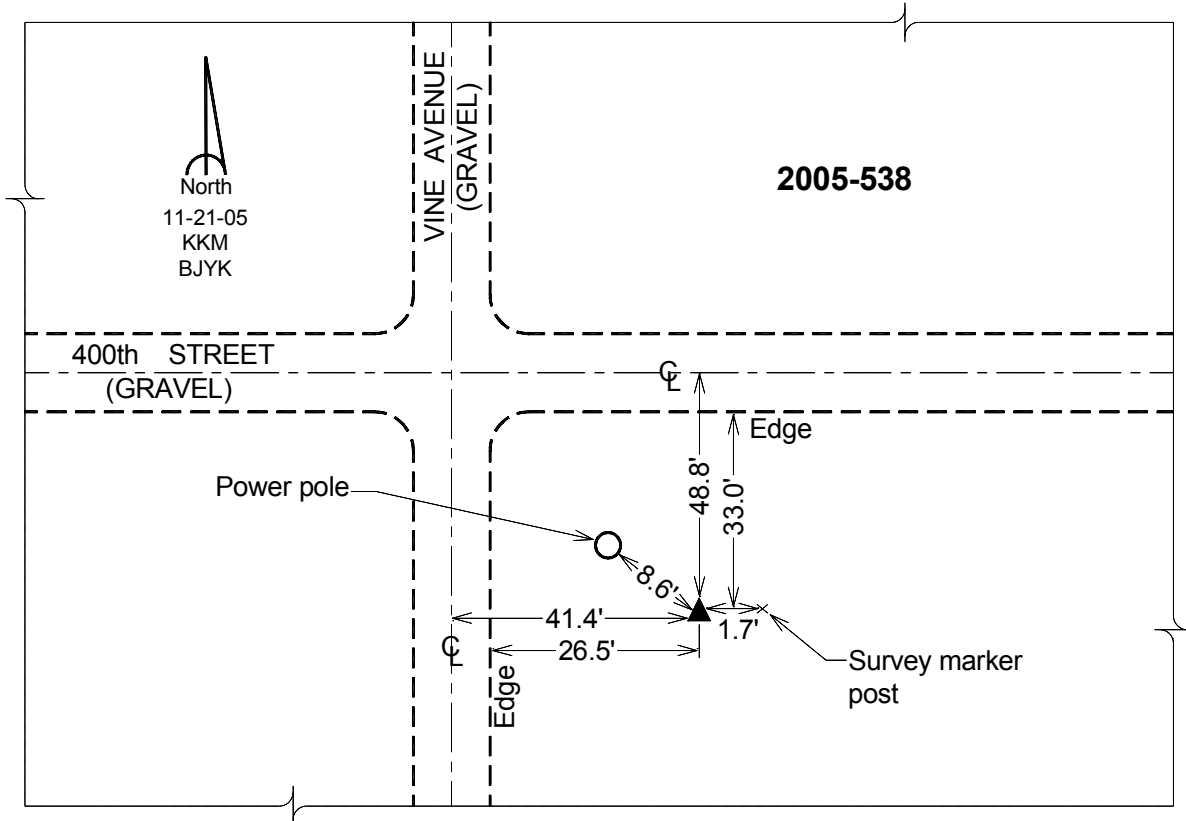
Northing: **3952473.45sft** Easting: **5032009.05sft**

Orthometric Height: **1218.86sft** Ellipsoid Height: **1124.45sft** **Geoid03**

Latitude: **43°20'31.90181"N** Longitude: **93°05'01.20692"W**

Mapping Angle: **0°16'56"** Combination Scale Factor: **0.99996103**

**Monument Type:** Berntsen Top Security Rod Monument with a 2-1/2" dia. domed survey cap and permanent magnet encased in a 6" dia. PVC pipe with a NGS style aluminum access cover.



*This document was prepared by DCI and GBC for use by Worth County, Iowa.*