

**Worth County, Iowa**  
 Iowa North Zone (1401)  
 Horiz. Datum: NAD83(1996)  
 Vert. Datum: NAVD 1988  
 US Survey Feet  
**2006**

Point Name: **539**

**Designation:** 2005-539 Worth Co GPS Control Point

Northing: **3968432.46sft** Easting: **5031863.97sft**

Orthometric Height: **1218.46sft** Ellipsoid Height: **1124.17sft** **Geoid03**

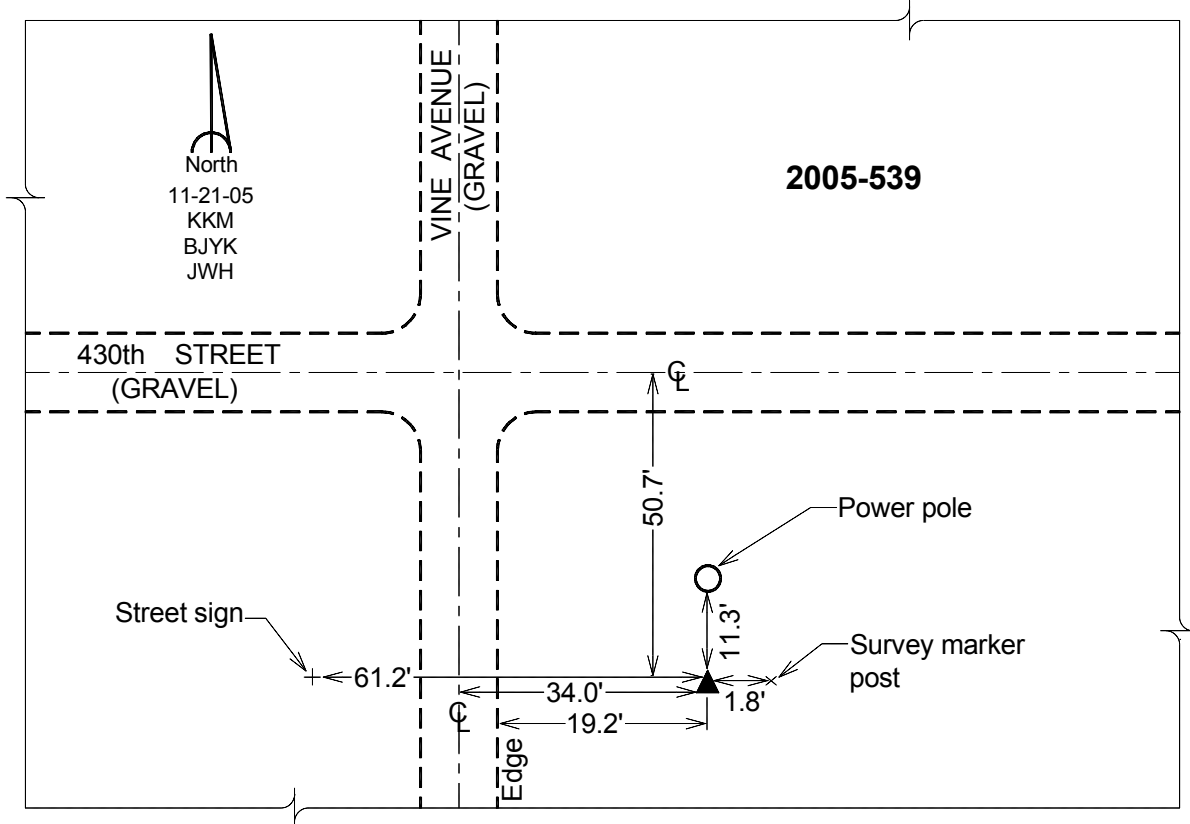
Latitude: **43°23'09.52380"N**

Longitude: **93°05'02.10732"W**

Mapping Angle: **0°16'55"**

Combination Scale Factor: **0.99997035**

**Monument Type:** Berntsen Top Security Rod Monument with a 2-1/2" dia. domed survey cap and permanent magnet encased in a 6" dia. PVC pipe with a NGS style aluminum access cover.



*This document was prepared by DCI and GBC for use by Worth County, Iowa.*