

Worth County, Iowa
 Iowa North Zone (1401)
 Horiz. Datum: NAD83(1996)
 Vert. Datum: NAVD 1988
 US Survey Feet
2006

Point Name: **601**

Designation: 2005-601 Mitchell Co GPS Control Point

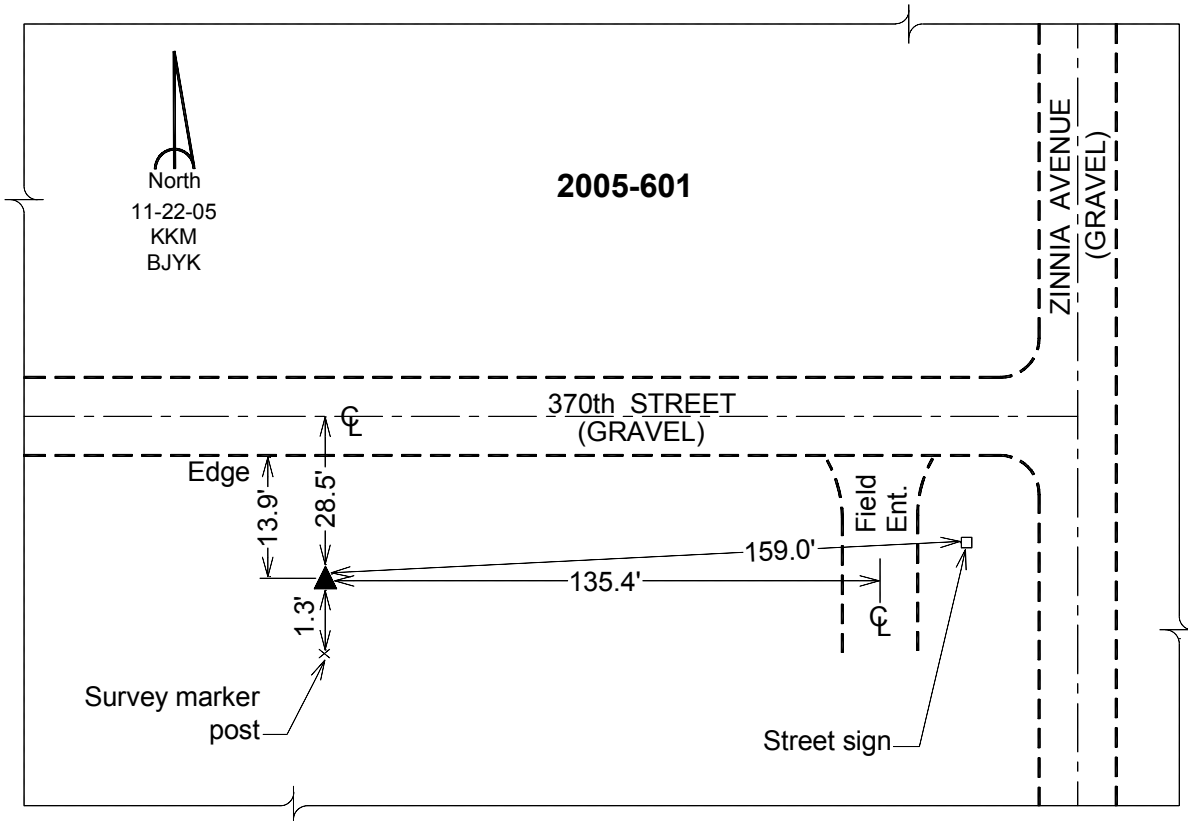
Northing: **3936809.18**sft Easting: **5047734.99**sft

Orthometric Height: **1236.51**sft Ellipsoid Height: **1141.07**sft **Geoid03**

Latitude: **43°17'56.37668"N** Longitude: **93°01'29.59872"W**

Mapping Angle: **0°19'19"** Combination Scale Factor: **0.99995163**

Monument Type: Berntsen Top Security Rod Monument with a 2-1/2" dia. domed survey cap and permanent magnet encased in a 6" dia. PVC pipe with a NGS style aluminum access cover.



This document was prepared by DCI and GBC for use by Worth County, Iowa.