

Worth County, Iowa
Iowa North Zone (1401)
Horiz. Datum: NAD83(1996)
Vert. Datum: NAVD 1988
US Survey Feet
2006

Point Name: **604**

Designation: 2005-604 Mitchell Co GPS Control Point

Northing: **3985141.65**sft Easting: **5047607.93**sft

Orthometric Height: **1185.75**sft Ellipsoid Height: **1091.08**sft **Geoid03**

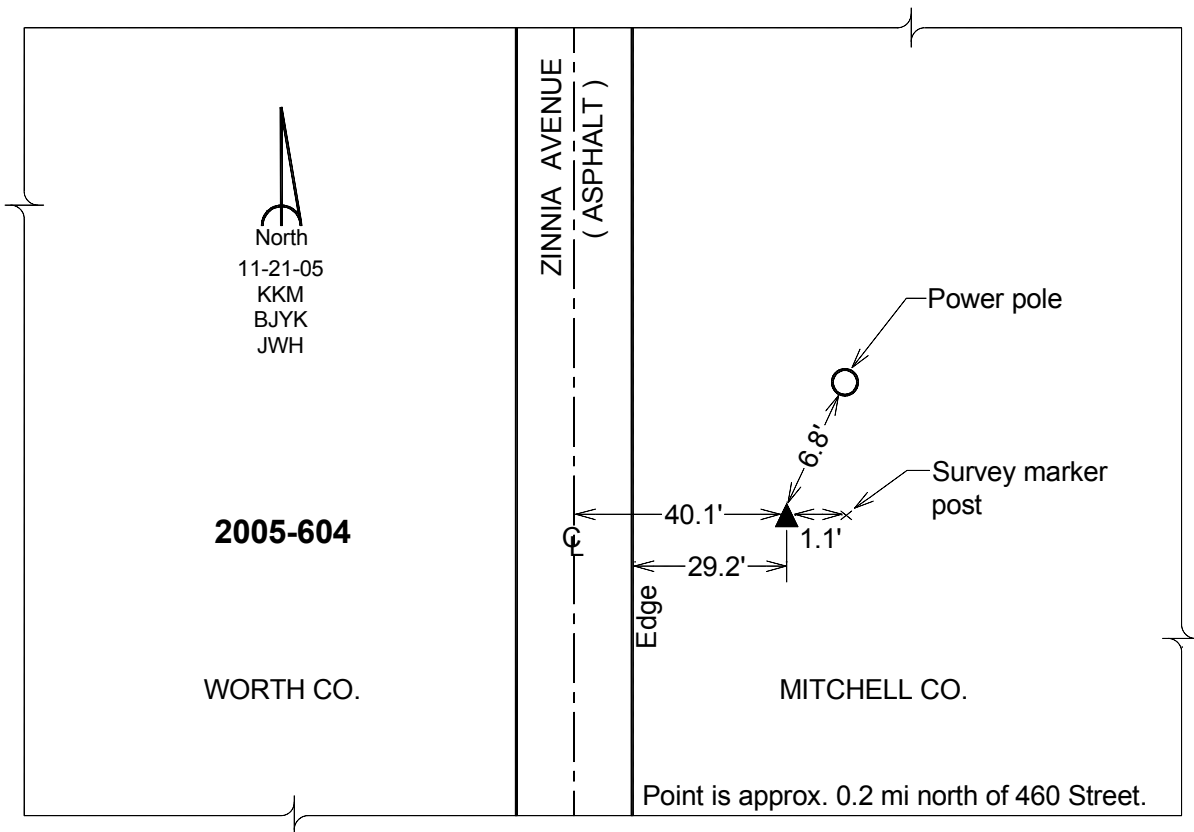
Latitude: **43°25'53.72439"N**

Longitude: **93°01'27.63966"W**

Mapping Angle: **0°19'21"**

Combination Scale Factor: **0.99998225**

Monument Type: Berntsen Top Security Rod Monument with a 2-1/2" dia. domed survey cap and permanent magnet encased in a 6" dia. PVC pipe with a NGS style aluminum access cover.



This document was prepared by DCI and GBC for use by Worth County, Iowa.