

**Worth County, Iowa**  
 Iowa North Zone (1401)  
 Horiz. Datum: NAD83(1996)  
 Vert. Datum: NAVD 1988  
 US Survey Feet  
**2006**

Point Name: **606**

**Designation:** 2005-606 Mitchell Co GPS Control Point

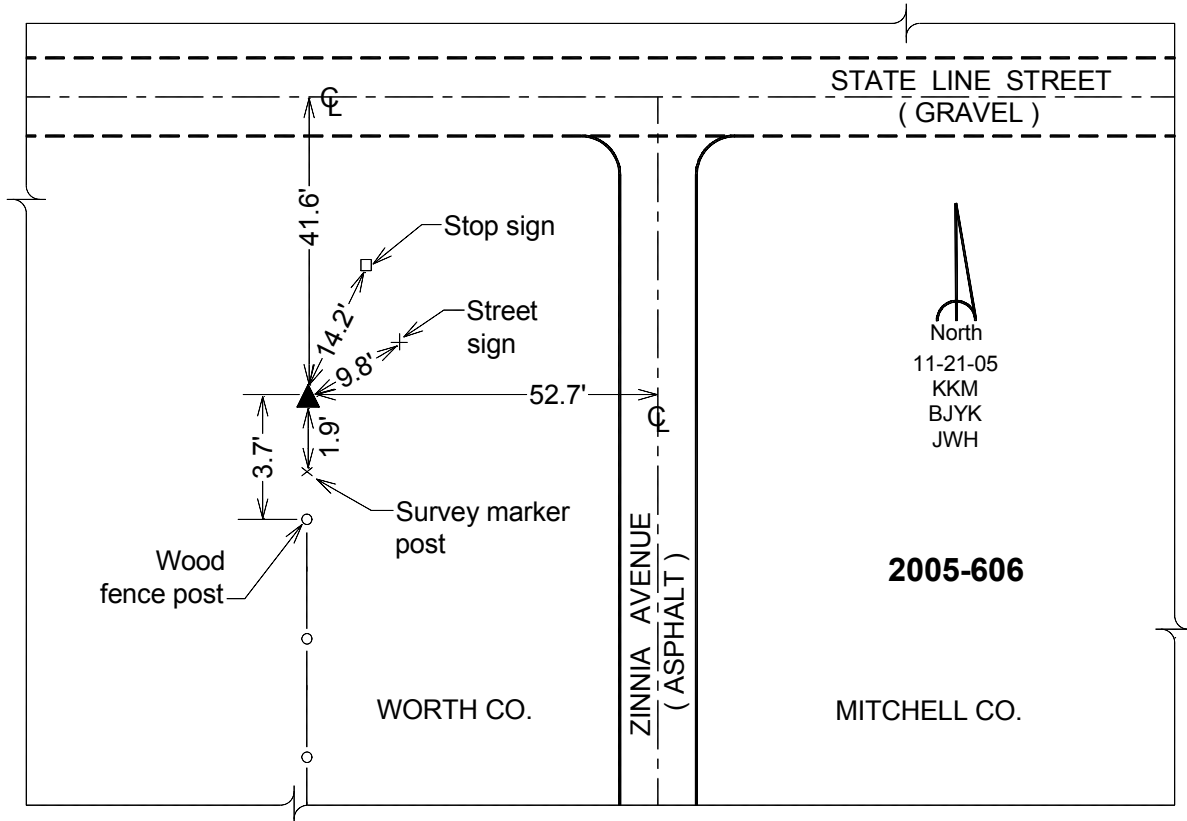
Northing: **4009932.75**sft Easting: **5047413.19**sft

Orthometric Height: **1170.58**sft Ellipsoid Height: **1076.31**sft **Geoid03**

Latitude: **43°29'58.56693"N** Longitude: **93°01'28.38923"W**

Mapping Angle: **0°19'20"** Combination Scale Factor: **0.99999954**

**Monument Type:** Berntsen Top Security Rod Monument with a 2-1/2" dia. domed survey cap and permanent magnet encased in a 6" dia. PVC pipe with a NGS style aluminum access cover.



*This document was prepared by DCI and GBC for use by Worth County, Iowa.*