

Worth County, Iowa
Iowa North Zone (1401)
Horiz. Datum: NAD83(1996)
Vert. Datum: NAVD 1988
US Survey Feet
2006

Point Name: **703**

Designation: CBN Horizontal control station. PID:OO1179 Designation: JOICE RESET

Northing: **3958527.82sft** Easting: **4945575.64sft**

Orthometric Height: **1343.46sft** Ellipsoid Height: **1247.78sft** **Geoid03**

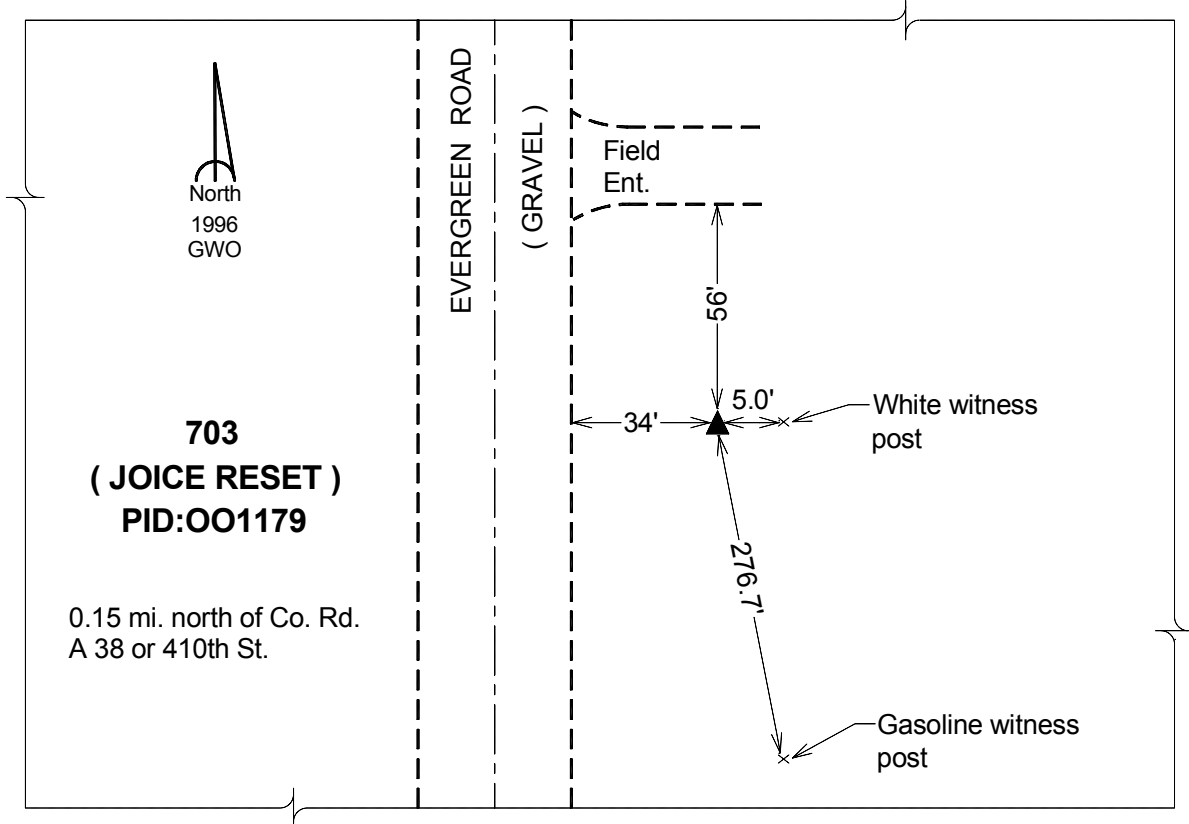
Latitude: **43°21'34.26087"N**

Longitude: **93°24'30.73392"W**

Mapping Angle: **0°03'43"**

Combination Scale Factor: **0.99995875**

Monument Type: The station is a CGS survey disk stamped "JOICE 1926 1971" and set in top of a 12-inch square concrete monument.



This document was prepared by DCI and GBC for use by Worth County, Iowa.