

Worth County, Iowa
Iowa North Zone (1401)
Horiz. Datum: NAD83(1996)
Vert. Datum: NAVD 1988
US Survey Feet
2006

Point Name: **722**

Designation: MnDOT vertical control station #9013 Designation: 2406 U

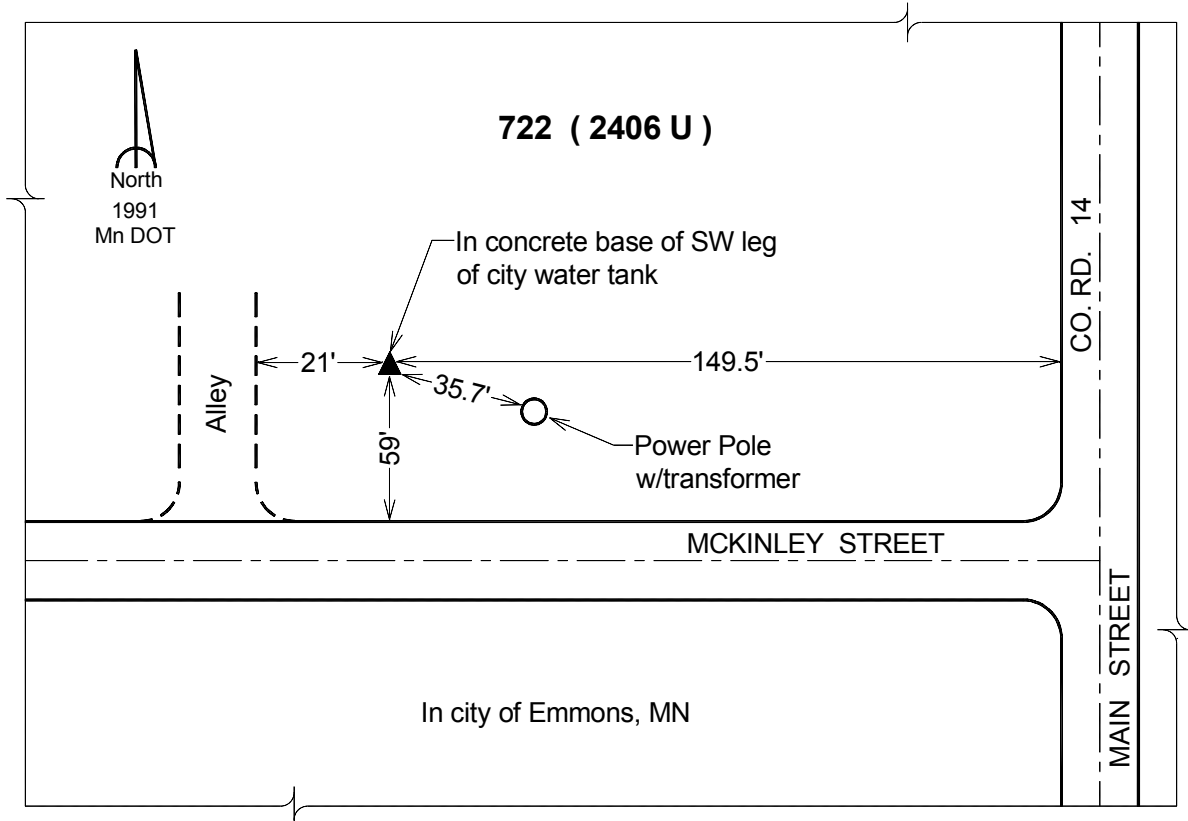
Northing: **4010527.58sft** Easting: **4924101.85sft**

Orthometric Height: **1286.89sft** Ellipsoid Height: **1190.50sft** **Geoid03**

Latitude: **43°30'07.94313"N** Longitude: **93°29'21.30848"W**

Mapping Angle: **0°00'26"** Combination Scale Factor: **0.99999475**

Monument Type: The station is a MnDOT vertical control disk stamped "2406 U 1991" set in concrete footing.



This document was prepared by DCI and GBC for use by Worth County, Iowa.