

Worth County, Iowa
Iowa North Zone (1401)
Horiz. Datum: NAD83(1996)
Vert. Datum: NAVD 1988
US Survey Feet
2006

Point Name: **726**

Designation: MnDOT horizontal and vertical control station #9290 Designation: WOLFF

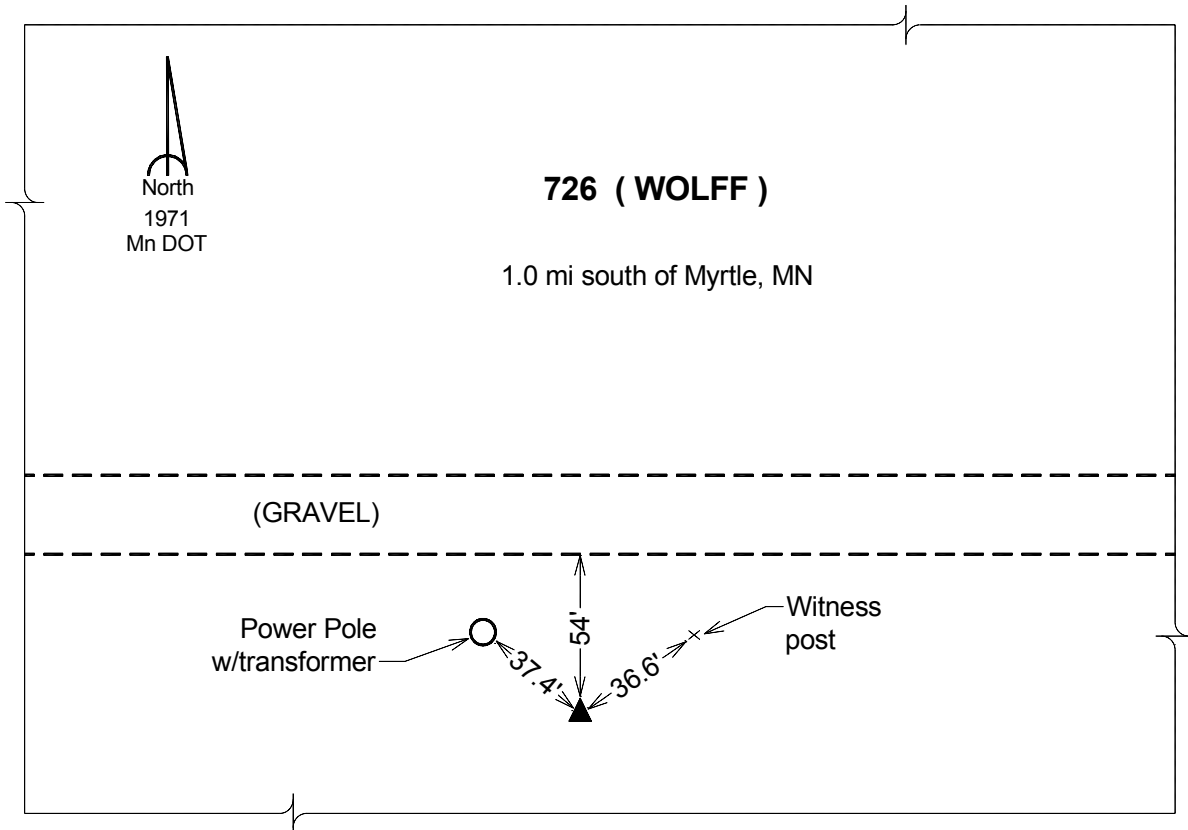
Northing: **4030873.38sft** Easting: **5012837.83sft**

Orthometric Height: **1264.42sft** Ellipsoid Height: **1170.11sft** **Geoid03**

Latitude: **43°33'27.02534"N** Longitude: **93°09'16.29354"W**

Mapping Angle: **0°14'03"** Combination Scale Factor: **1.00001030**

Monument Type: The station is a MnDOT triangulation station disk stamped "WOLFF 1971" and set in the top of a concrete monument.



This document was prepared by DCI and GBC for use by Worth County, Iowa.