

Worth County, Iowa
Iowa North Zone (1401)
Horiz. Datum: NAD83(1996)
Vert. Datum: NAVD 1988
US Survey Feet
2006

Point Name: **731**

Designation: MnDOT horizontal and vertical control station #20568 Designation: KAUS MNMT

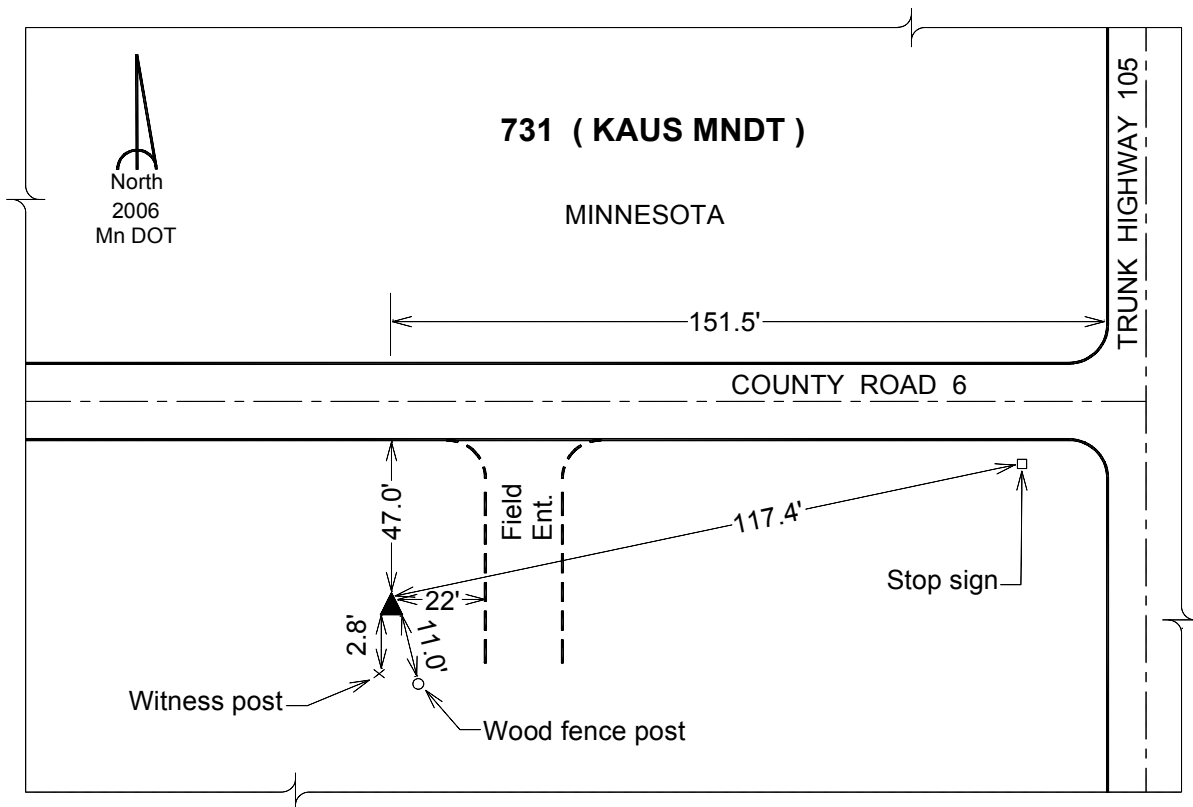
Northing: **4015241.84sft** Easting: **5051202.10sft**

Orthometric Height: **1158.56sft** Ellipsoid Height: **1064.24sft** **Geoid03**

Latitude: **43°30'50.78378"N** Longitude: **93°00'36.57019"W**

Mapping Angle: **0°19'55"** Combination Scale Factor: **1.00000383**

Monument Type: The station is punch mark on 24 feet long driven steel rod with access cover.



This document was prepared by DCI and GBC for use by Worth County, Iowa.