

Wright County, Iowa
Horizontal Datum: **NAD 83(NA2011)** - Vertical Datum: **NAVD 1988**
Iowa State Plane North Zone (1401)
Iowa Regional Coordinate System, Zone 4, Sioux City – Iowa Falls
Units: US Survey Feet
05/27/2020

Point Name: **990001**

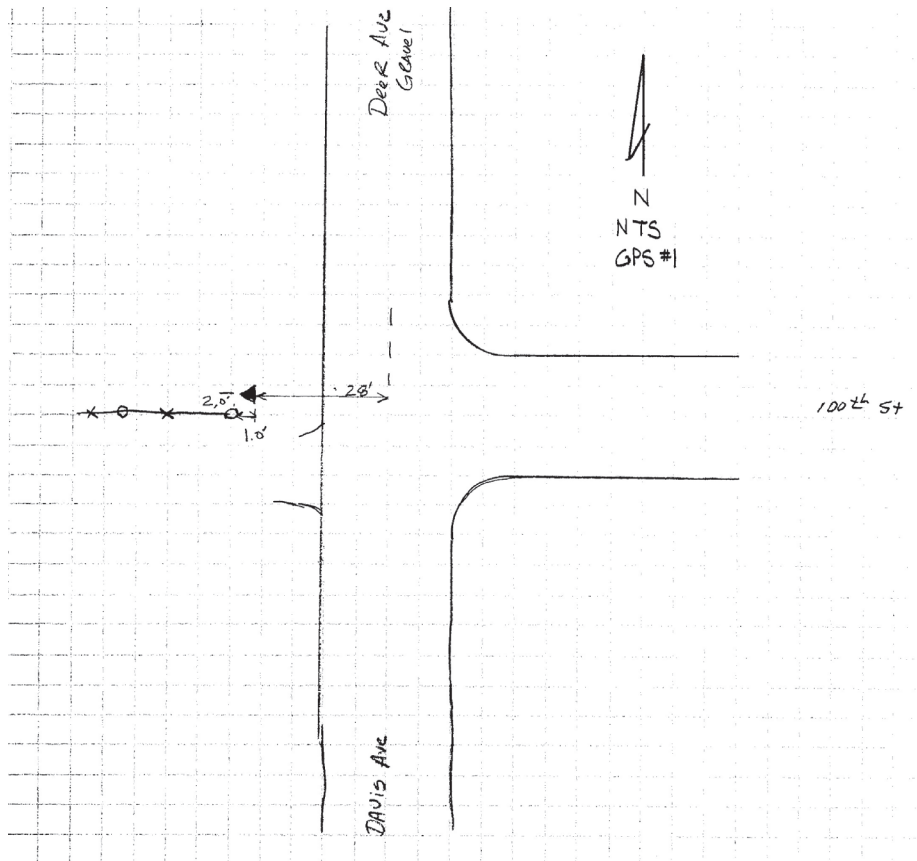
Designation: Wright County 0001 (set by V&K in 2004)

NAD 83(NA2011) Latitude: **N42°54'29.43055"** Longitude: **W93°54'40.85757"**
NAVD 88 Ortho Height: **1139.693sft** Ellip. Ht: **1043.702sft** Geoid18

Iowa North Zone (1401) Northing: **3794278.456sft** Easting: **4811046.630sft**
Mapping Angle: **-0°16'43.6"** Combination Scale Factor: **0.9999042742**

IaRCS Zone 4 Northing: **8737965.203sft** Easting: **14747029.803sft**
Mapping Angle: **0°37'23.8"** Combination Scale Factor: **1.0000164770**

Monument Type: 5/8" diameter aluminum rod with a 2-1/2" dia. aluminum cap & permanent magnet encased in a 5" dia. PVC pipe with aluminum access cover.



This document was prepared by Dan Corbin, Inc. on May 25th, 2021 for Wright County, Iowa.