

Wright County, Iowa

Horizontal Datum: **NAD 83(NA2011)** - Vertical Datum: **NAVD 1988**

Iowa State Plane North Zone (1401)

Iowa Regional Coordinate System, Zone 4, Sioux City – Iowa Falls

Units: US Survey Feet

05/27/2020

Point Name: **990002**

Designation: Wright County 0002 (set by V&K in 2004)

NAD 83(NA2011) Latitude: **N42°54'30.65036"** Longitude: **W93°47'36.46044"**

NAVD 88 Ortho Height: **1185.641sft** Ellip. Ht: **1090.320sft** Geoid18

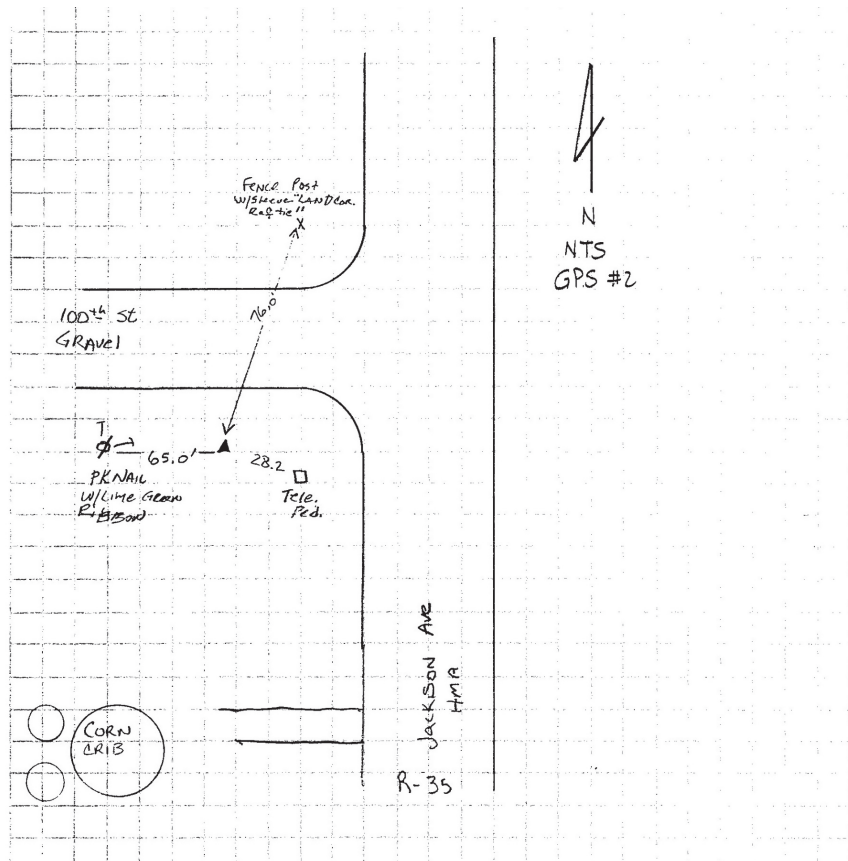
Iowa North Zone (1401) Northing: **3794270.290sft** Easting: **4842629.954sft**

Mapping Angle: **-0°11'56.0"** Combination Scale Factor: **0.9999020710**

IaRCS Zone 4 Northing: **8738454.266sft** Easting: **14778612.885sft**

Mapping Angle: **0°42'10.7"** Combination Scale Factor: **1.0000142874**

Monument Type: 5/8" diameter aluminum rod with a 2-1/2" dia. aluminum cap & permanent magnet encased in a 5" dia. PVC pipe with aluminum access cover.



This document was prepared by Dan Corbin, Inc. on May 25th, 2021 for Wright County, Iowa.