

**Wright County, Iowa**  
 Horizontal Datum: **NAD 83(NA2011)** - Vertical Datum: **NAVD 1988**  
 Iowa State Plane North Zone (1401)  
 Iowa Regional Coordinate System, Zone 4, Sioux City – Iowa Falls  
 Units: US Survey Feet  
**05/27/2020**

Point Name: **990006**

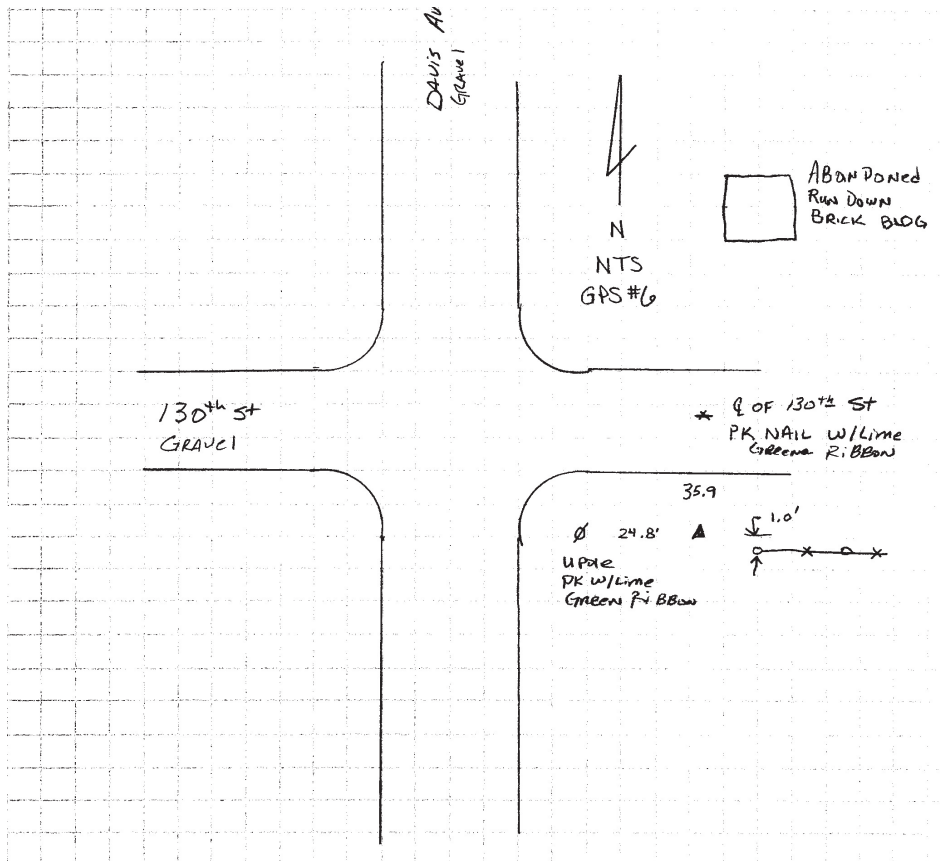
**Designation:** Wright County 0006 (set by V&K in 2004)

NAD 83(NA2011) Latitude: **N42°51'46.87659"** Longitude: **W93°54'41.19759"**  
 NAVD 88 Ortho Height: **1142.460sft** Ellip. Ht: **1046.953sft** Geoid18

**Iowa North Zone (1401)** Northing: **3777822.345sft** Easting: **4810941.236sft**  
 Mapping Angle: **-0°16'43.9"** Combination Scale Factor: **0.9999011265**

**IaRCS Zone 4** Northing: **8721507.641sft** Easting: **14747183.513sft**  
 Mapping Angle: **0°37'23.6"** Combination Scale Factor: **1.0000114797**

**Monument Type:** 5/8" diameter aluminum rod with a 2-1/2" dia. aluminum cap & permanent magnet encased in a 5" dia. PVC pipe with aluminum access cover.



*This document was prepared by Dan Corbin, Inc. on May 25<sup>th</sup>, 2021 for Wright County, Iowa.*