

Wright County, Iowa
 Horizontal Datum: **NAD 83(NA2011)** - Vertical Datum: **NAVD 1988**
 Iowa State Plane North Zone (1401)
 Iowa Regional Coordinate System, Zone 4, Sioux City – Iowa Falls
 Units: US Survey Feet
05/27/2020

Point Name: **990008**

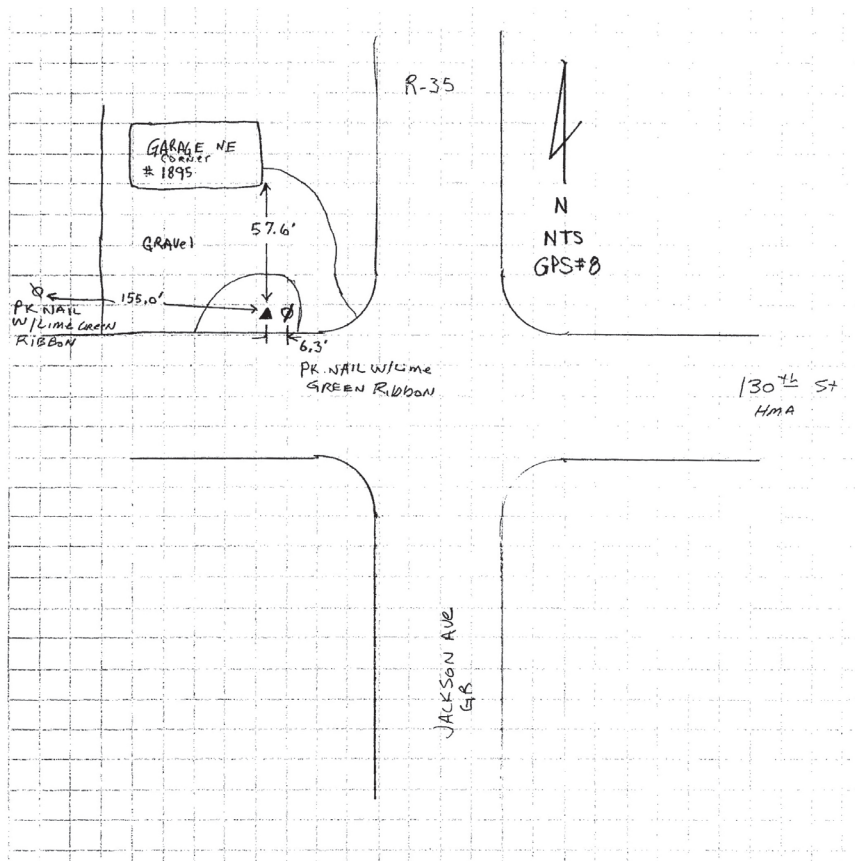
Designation: Wright County 0008 (set by V&K in 2004)

NAD 83(NA2011) Latitude: **N42°51'47.61650"** Longitude: **W93°47'37.84273"**
 NAVD 88 Ortho Height: **1171.204sft** Ellip. Ht: **1076.743sft** Geoid18

Iowa North Zone (1401) Northing: **3777765.734sft** Easting: **4842469.718sft**
 Mapping Angle: **-0°11'56.9"** Combination Scale Factor: **0.9998997149**

IaRCS Zone 4 Northing: **8721947.395sft** Easting: **14778712.459sft**
 Mapping Angle: **0°42'09.8"** Combination Scale Factor: **1.0000100764**

Monument Type: 5/8" diameter aluminum rod with a 2-1/2" dia. aluminum cap & permanent magnet encased in a 5" dia. PVC pipe with aluminum access cover.



This document was prepared by Dan Corbin, Inc. on May 25th, 2021 for Wright County, Iowa.