

**Wright County, Iowa**  
Horizontal Datum: **NAD 83(NA2011)** - Vertical Datum: **NAVD 1988**  
Iowa State Plane North Zone (1401)  
Iowa Regional Coordinate System, Zone 4, Sioux City – Iowa Falls  
Units: US Survey Feet  
**05/27/2020**

Point Name: **990012**

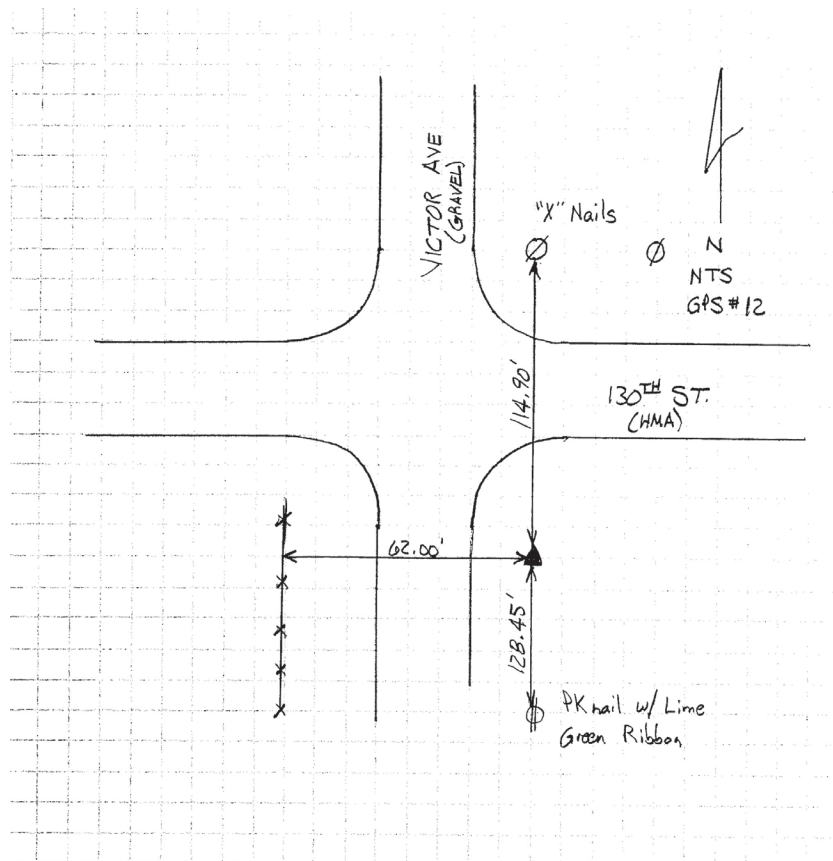
**Designation:** Wright County 0012 (set by V&K in 2004)

NAD 83(NA2011) Latitude: **N42°51'46.58472"** Longitude: **W93°33'28.45335"**  
NAVD 88 Ortho Height: **1215.160sft** Ellip. Ht: **1123.811sft** Geoid18

**Iowa North Zone (1401)** Northing: **3777529.682sft** Easting: **4905725.838sft**  
Mapping Angle: **-0°02'21.3"** Combination Scale Factor: **0.9998974484**

**IaRCS Zone 4** Northing: **8722706.875sft** Easting: **14841971.443sft**  
Mapping Angle: **0°51'44.0"** Combination Scale Factor: **1.0000077978**

**Monument Type:** 5/8" diameter aluminum rod with a 2-1/2" dia. aluminum cap & permanent magnet encased in a 5" dia. PVC pipe with aluminum access cover.



*This document was prepared by Dan Corbin, Inc. on May 25<sup>th</sup>, 2021 for Wright County, Iowa.*