

Wright County, Iowa
Horizontal Datum: **NAD 83(NA2011)** - Vertical Datum: **NAVD 1988**
Iowa State Plane North Zone (1401)
Iowa Regional Coordinate System, Zone 4, Sioux City – Iowa Falls
Units: US Survey Feet
05/27/2020

Point Name: **990014**

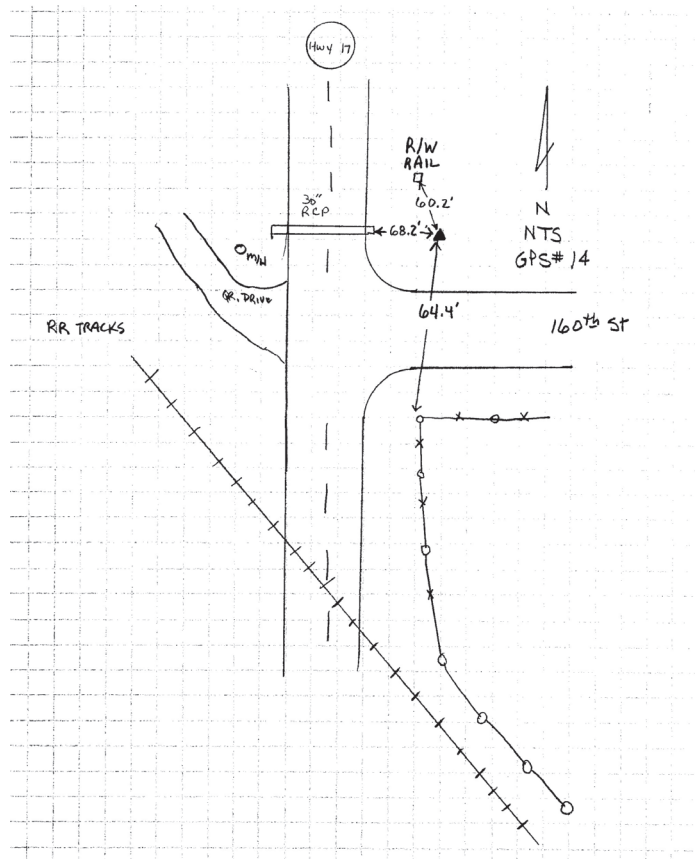
Designation: Wright County 0014 (set by V&K in 2004)

NAD 83(NA2011) Latitude: **N42°49'11.18306"** Longitude: **W93°58'15.87949"**
NAVD 88 Ortho Height: **1128.495sft** Ellip. Ht: **1033.140sft** Geoid18

Iowa North Zone (1401) Northing: **3762144.303sft** Easting: **4794865.623sft**
Mapping Angle: **-0°19'09.4"** Combination Scale Factor: **0.9998995026**

IaRCS Zone 4 Northing: **8705576.699sft** Easting: **14731355.001sft**
Mapping Angle: **0°34'58.4"** Combination Scale Factor: **1.0000080857**

Monument Type: 5/8" diameter aluminum rod with a 2-1/2" dia. aluminum cap & permanent magnet encased in a 5" dia. PVC pipe with aluminum access cover.



This document was prepared by Dan Corbin, Inc. on May 25th, 2021 for Wright County, Iowa.