

Wright County, Iowa
Horizontal Datum: **NAD 83(NA2011)** - Vertical Datum: **NAVD 1988**
Iowa State Plane North Zone (1401)
Iowa Regional Coordinate System, Zone 4, Sioux City – Iowa Falls
Units: US Survey Feet
05/27/2020

Point Name: **990016**

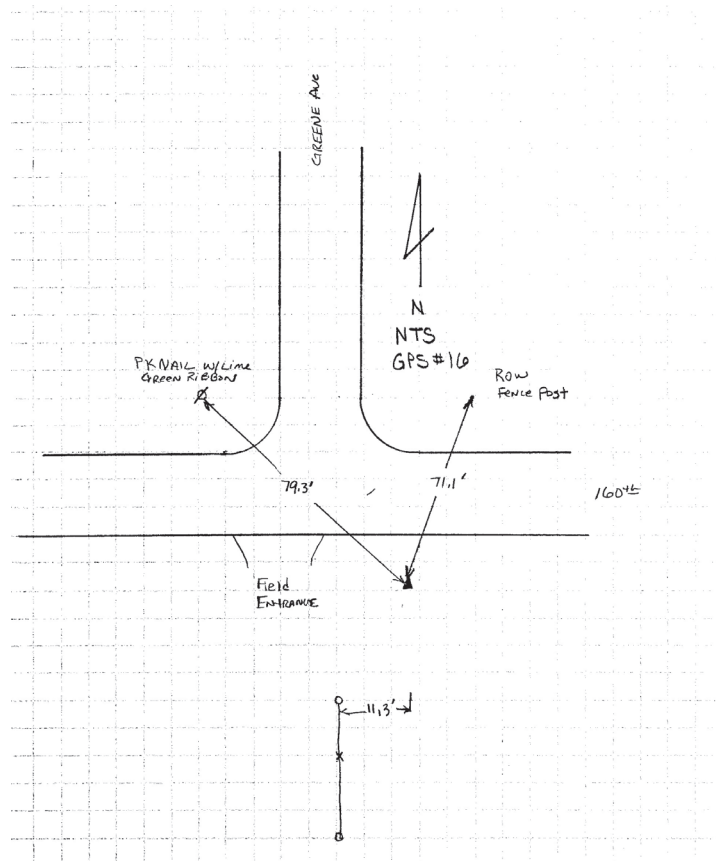
Designation: Wright County 0016 (set by V&K in 2004)

NAD 83(NA2011) Latitude: **N42°49'10.83475"** Longitude: **W93°51'09.63688"**
NAVD 88 Ortho Height: **1136.487sft** Ellip. Ht: **1042.311sft** Geoid18

Iowa North Zone (1401) Northing: **3761954.279sft** Easting: **4826630.730sft**
Mapping Angle: **-0°14'20.5"** Combination Scale Factor: **0.9998990598**

IaRCS Zone 4 Northing: **8705886.824sft** Easting: **14763122.611sft**
Mapping Angle: **0°39'46.6"** Combination Scale Factor: **1.0000076389**

Monument Type: 5/8" diameter aluminum rod with a 2-1/2" dia. aluminum cap & permanent magnet encased in a 5" dia. PVC pipe with aluminum access cover.



This document was prepared by Dan Corbin, Inc. on May 25th, 2021 for Wright County, Iowa.