

Wright County, Iowa
Horizontal Datum: **NAD 83(NA2011)** - Vertical Datum: **NAVD 1988**
Iowa State Plane North Zone (1401)
Iowa Regional Coordinate System, Zone 4, Sioux City – Iowa Falls
Units: US Survey Feet
05/27/2020

Point Name: **990020**

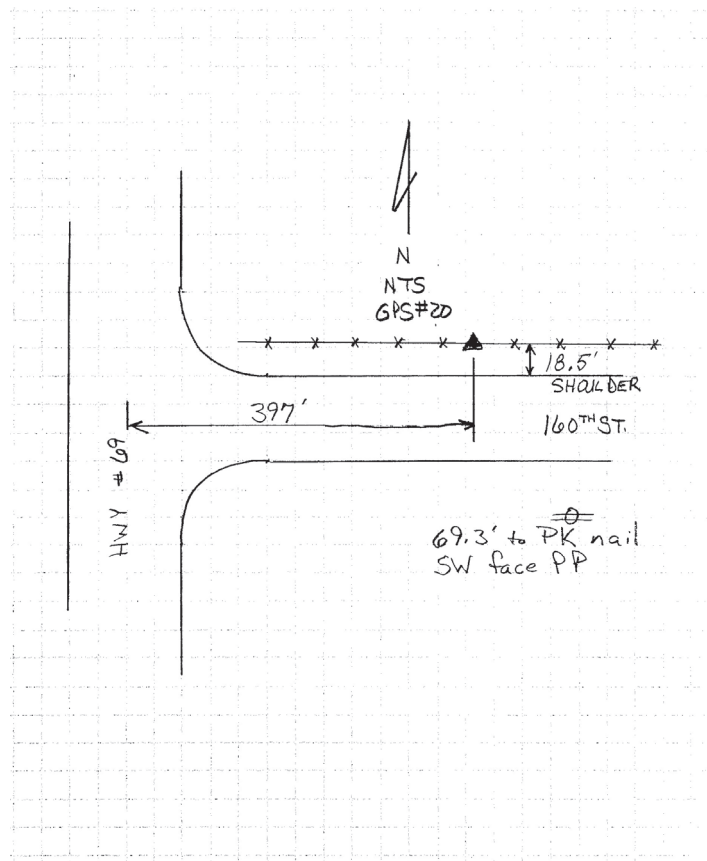
Designation: Wright County 0020 (set by V&K in 2004)

NAD 83(NA2011) Latitude: **N42°49'05.89931"** Longitude: **W93°36'55.52428"**
NAVD 88 Ortho Height: **1165.271sft** Ellip. Ht: **1074.171sft** Geoid18

Iowa North Zone (1401) Northing: **3761278.415sft** Easting: **4890282.428sft**
Mapping Angle: **-0°04'41.6"** Combination Scale Factor: **0.9998974741**

IaRCS Zone 4 Northing: **8706212.834sft** Easting: **14826783.974sft**
Mapping Angle: **0°49'24.0"** Combination Scale Factor: **1.0000059969**

Monument Type: 5/8" diameter aluminum rod with a 2-1/2" dia. aluminum cap & permanent magnet encased in a 5" dia. PVC pipe with aluminum access cover.



This document was prepared by Dan Corbin, Inc. on May 25th, 2021 for Wright County, Iowa.