

Wright County, Iowa
 Horizontal Datum: **NAD 83(NA2011)** - Vertical Datum: **NAVD 1988**
 Iowa State Plane North Zone (1401)
 Iowa Regional Coordinate System, Zone 4, Sioux City – Iowa Falls
 Units: US Survey Feet
05/27/2020

Point Name: **990021**

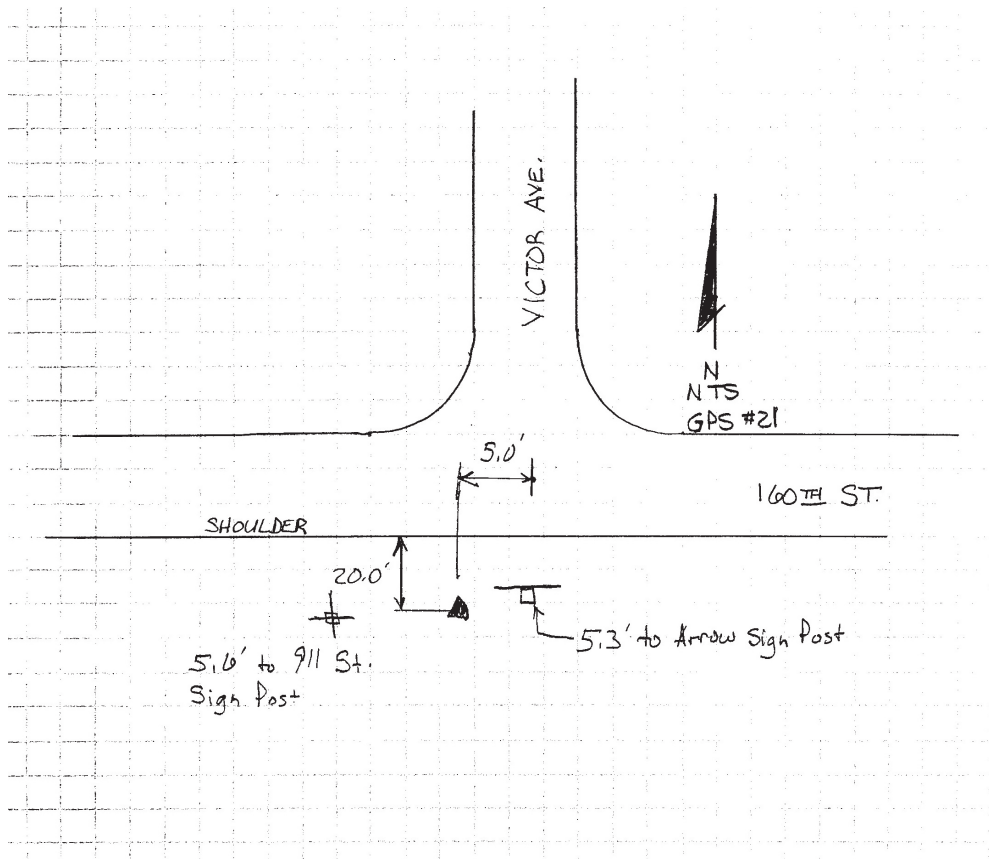
Designation: Wright County 0021 (set by V&K in 2004)

NAD 83(NA2011) Latitude: **N42°49'10.44385"** Longitude: **W93°33'27.69359"**
 NAVD 88 Ortho Height: **1207.712sft** Ellip. Ht: **1117.058sft** Geoid18

Iowa North Zone (1401) Northing: **3761722.623sft** Easting: **4905771.633sft**
 Mapping Angle: **-0°02'20.8"** Combination Scale Factor: **0.9998954824**

IaRCS Zone 4 Northing: **8706900.763sft** Easting: **14842265.953sft**
 Mapping Angle: **0°51'44.5"** Combination Scale Factor: **1.0000040567**

Monument Type: 5/8" diameter aluminum rod with a 2-1/2" dia. aluminum cap & permanent magnet encased in a 5" dia. PVC pipe with aluminum access cover.



This document was prepared by Dan Corbin, Inc. on May 25th, 2021 for Wright County, Iowa.