

Wright County, Iowa
Horizontal Datum: **NAD 83(NA2011)** - Vertical Datum: **NAVD 1988**
Iowa State Plane North Zone (1401)
Iowa Regional Coordinate System, Zone 4, Sioux City – Iowa Falls
Units: US Survey Feet
05/27/2020

Point Name: **990026**

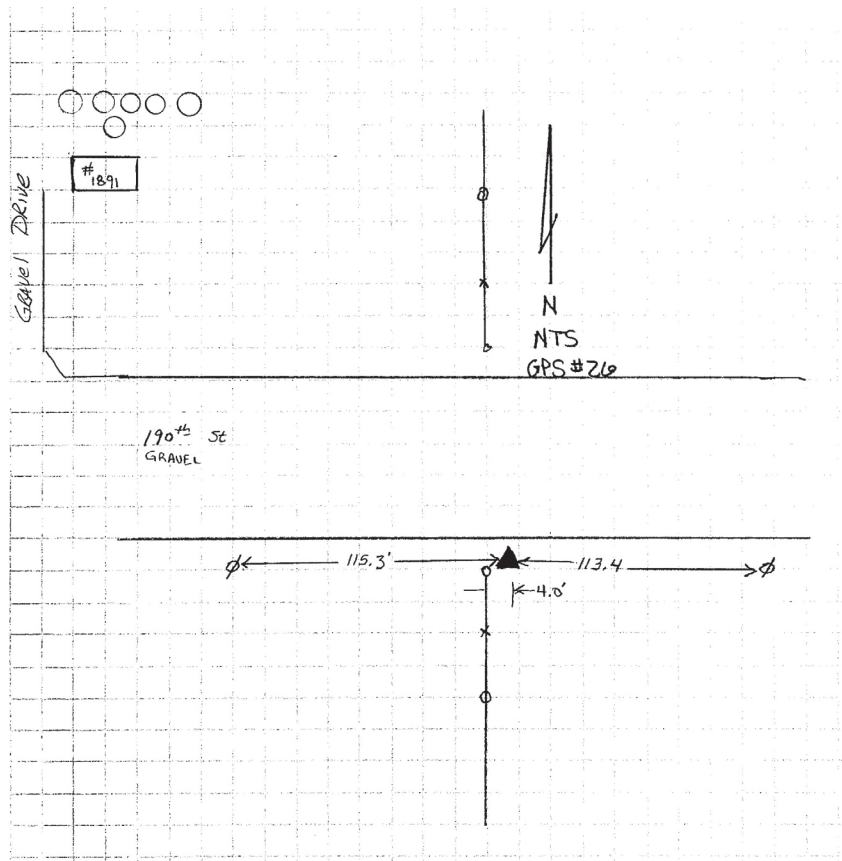
Designation: Wright County 0026 (reset by DCI in 2020)

NAD 83(NA2011) Latitude: **N42°46'29.99359"** Longitude: **W93°47'38.06290"**
NAVD 88 Ortho Height: **1145.481sft** Ellip. Ht: **1053.216sft** Geoid18

Iowa North Zone (1401) Northing: **3745611.377sft** Easting: **4842341.533sft**
Mapping Angle: **-0°11'57.1"** Combination Scale Factor: **0.9998967780**

IaRCS Zone 4 Northing: **8689791.514sft** Easting: **14779090.437sft**
Mapping Angle: **0°42'09.6"** Combination Scale Factor: **1.0000035297**

Monument Type: 5/8" diameter aluminum rod with a 2-1/2" dia. aluminum cap & permanent magnet encased in a 5" dia. PVC pipe with aluminum access cover.



This document was prepared by Dan Corbin, Inc. on May 25th, 2021 for Wright County, Iowa.