

**Wright County, Iowa**  
Horizontal Datum: **NAD 83(NA2011)** - Vertical Datum: **NAVD 1988**  
Iowa State Plane North Zone (1401)  
Iowa Regional Coordinate System, Zone 4, Sioux City – Iowa Falls  
Units: US Survey Feet  
**05/27/2020**

Point Name: **990027**

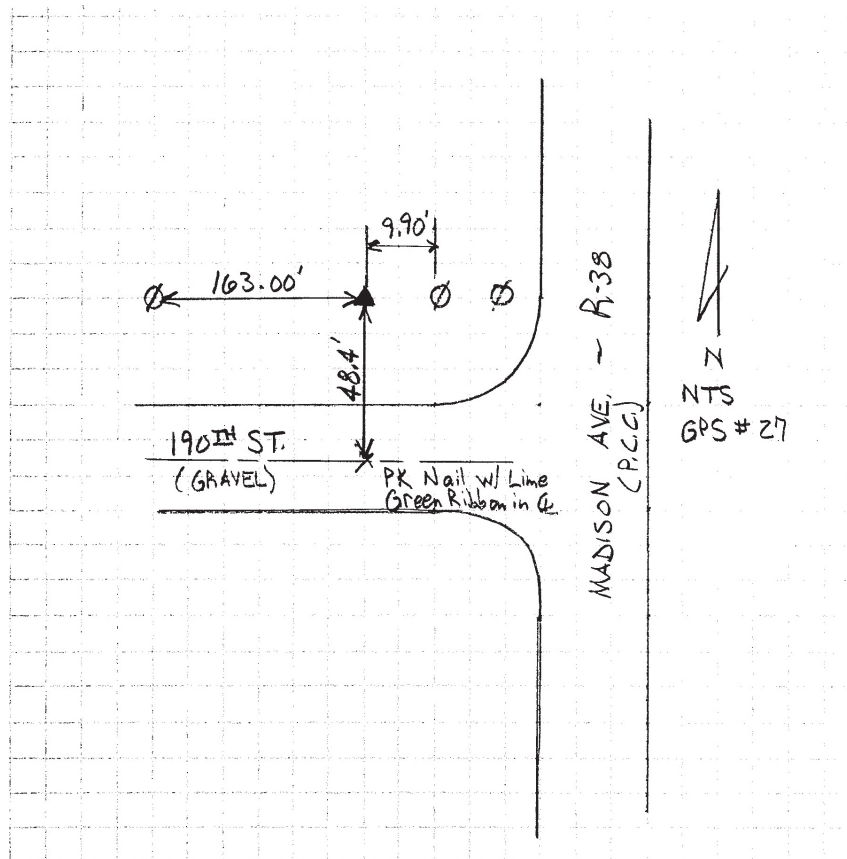
**Designation:** Wright County 0027 (set by V&K in 2004)

NAD 83(NA2011) Latitude: **N42°46'30.97818"** Longitude: **W93°44'07.56801"**  
NAVD 88 Ortho Height: **1181.185sft** Ellip. Ht: **1089.680sft** Geoid18

Iowa North Zone (1401) Northing: **3745661.903sft** Easting: **4858040.103sft**  
Mapping Angle: **-0°09'34.4"** Combination Scale Factor: **0.9998950442**

IaRCS Zone 4 Northing: **8690089.145sft** Easting: **14794787.943sft**  
Mapping Angle: **0°44'31.9"** Combination Scale Factor: **1.0000018069**

**Monument Type:** 5/8" diameter aluminum rod with a 2-1/2" dia. aluminum cap & permanent magnet encased in a 5" dia. PVC pipe with aluminum access cover.



*This document was prepared by Dan Corbin, Inc. on May 25<sup>th</sup>, 2021 for Wright County, Iowa.*