

Wright County, Iowa

Horizontal Datum: **NAD 83(NA2011)** - Vertical Datum: **NAVD 1988**

Iowa State Plane North Zone (1401)

Iowa Regional Coordinate System, Zone 4, Sioux City – Iowa Falls

Units: US Survey Feet

05/27/2020

Point Name: **990032**

Designation: Wright County 0032 (set by V&K in 2004)

NAD 83(NA2011) Latitude: **N42°43'53.23544"** Longitude: **W93°58'16.87300"**

NAVD 88 Ortho Height: **1119.362sft** Ellip. Ht: **1025.639sft** Geoid18

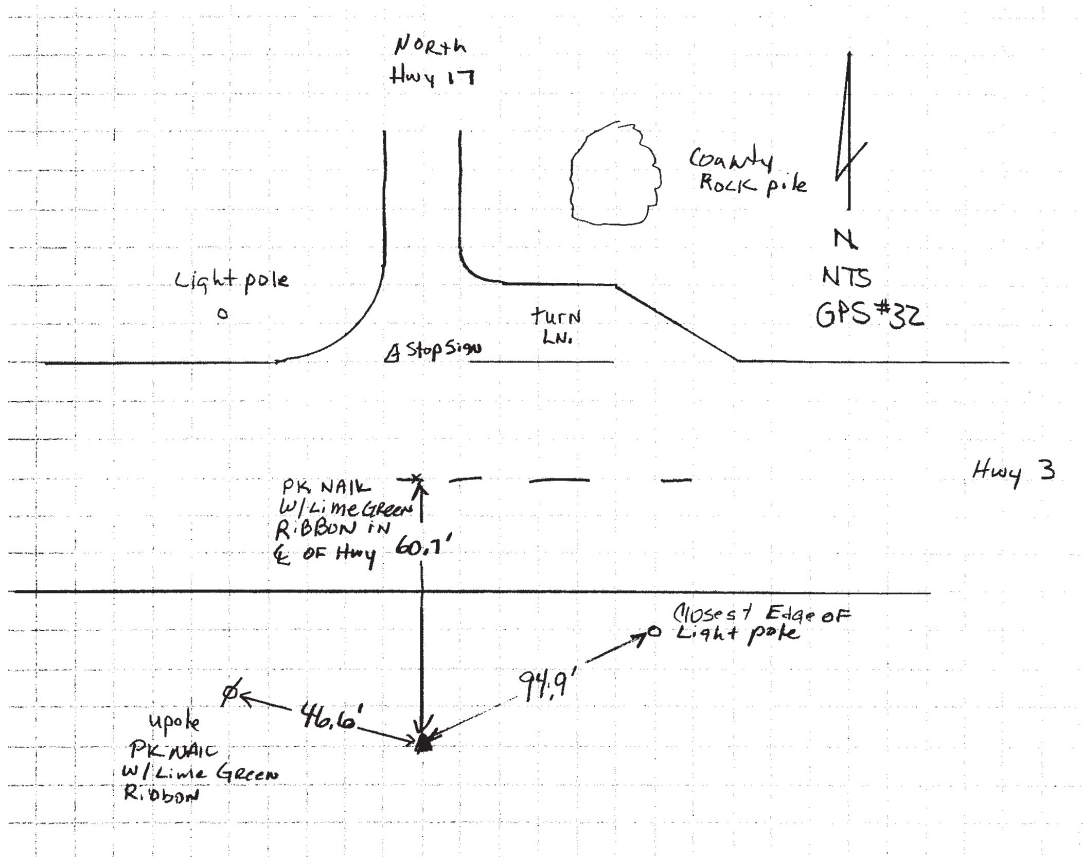
Iowa North Zone (1401) Northing: **3729958.038sft** Easting: **4794612.122sft**

Mapping Angle: **-0°19'10.0"** Combination Scale Factor: **0.9998969641**

IaRCS Zone 4 Northing: **8673386.995sft** Easting: **14731608.338sft**

Mapping Angle: **0°34'57.8"** Combination Scale Factor: **1.0000019363**

Monument Type: 5/8" diameter aluminum rod with a 2-1/2" dia. aluminum cap & permanent magnet encased in a 5" dia. PVC pipe with aluminum access cover.



This document was prepared by Dan Corbin, Inc. on May 25th, 2021 for Wright County, Iowa.