

Wright County, Iowa
Horizontal Datum: **NAD 83(NA2011)** - Vertical Datum: **NAVD 1988**
Iowa State Plane North Zone (1401)
Iowa Regional Coordinate System, Zone 4, Sioux City – Iowa Falls
Units: US Survey Feet
05/27/2020

Point Name: **990033**

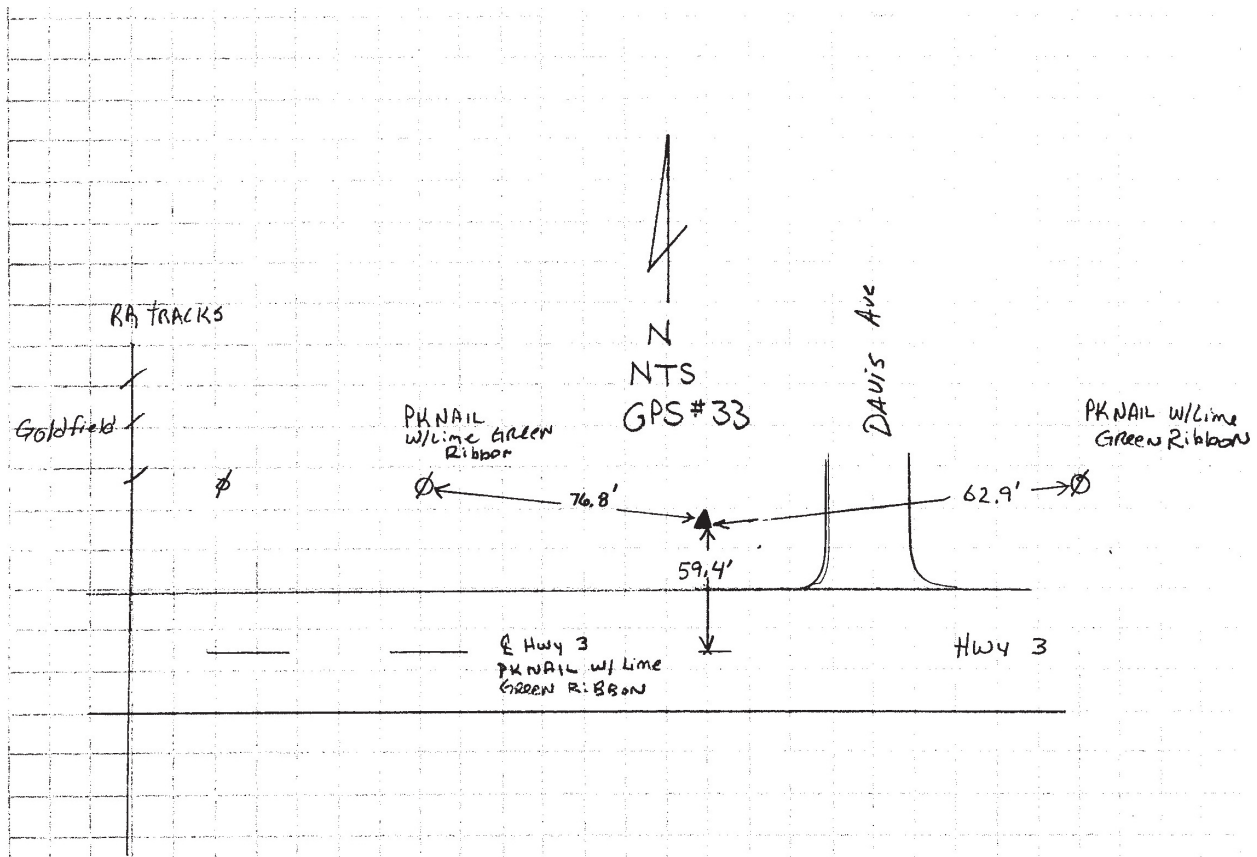
Designation: Wright County 0033 (set by V&K in 2004)

NAD 83(NA2011) Latitude: **N42°43'54.29422"** Longitude: **W93°54'46.24561"**
NAVD 88 Ortho Height: **1138.110sft** Ellip. Ht: **1045.207sft** Geoid18

Iowa North Zone (1401) Northing: **3729983.016sft** Easting: **4810331.664sft**
Mapping Angle: **-0°16'47.3"** Combination Scale Factor: **0.9998960346**

IaRCS Zone 4 Northing: **8673659.493sft** Easting: **14747327.189sft**
Mapping Angle: **0°37'20.2"** Combination Scale Factor: **1.0000010187**

Monument Type: 5/8" diameter aluminum rod with a 2-1/2" dia. aluminum cap & permanent magnet encased in a 5" dia. PVC pipe with aluminum access cover.



This document was prepared by Dan Corbin, Inc. on May 25th, 2021 for Wright County, Iowa.