

Wright County, Iowa
Horizontal Datum: **NAD 83(NA2011)** - Vertical Datum: **NAVD 1988**
Iowa State Plane North Zone (1401)
Iowa Regional Coordinate System, Zone 4, Sioux City – Iowa Falls
Units: US Survey Feet
05/27/2020

Point Name: **990034**

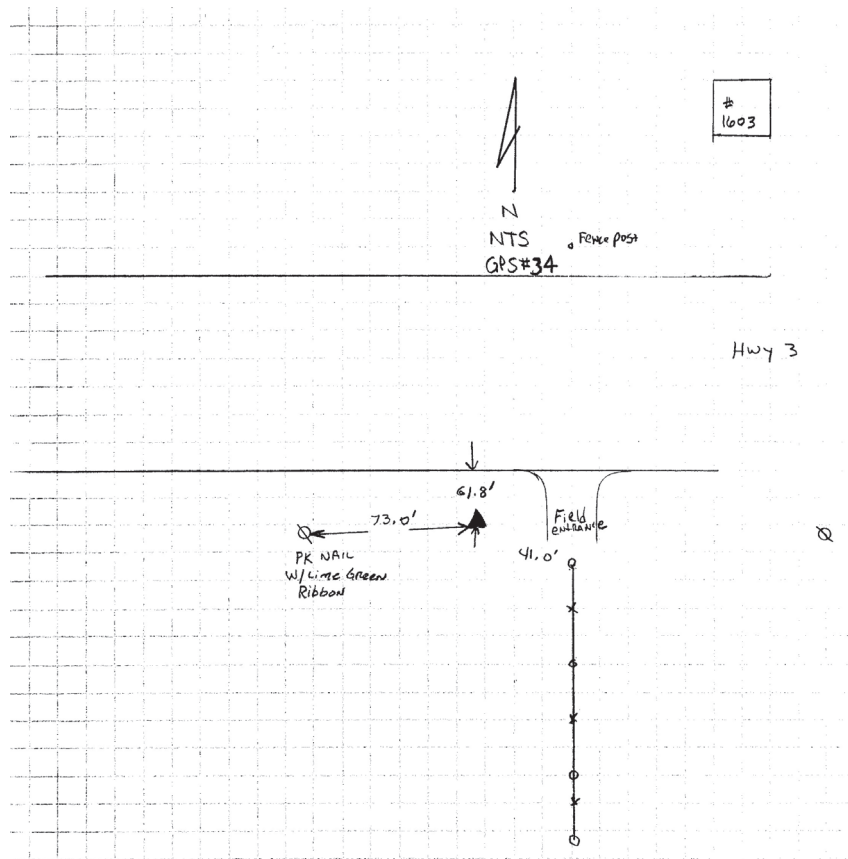
Designation: Wright County 0034 (set by V&K in 2004)

NAD 83(NA2011) Latitude: **N42°43'53.47702"** Longitude: **W93°51'10.85100"**
NAVD 88 Ortho Height: **1144.177sft** Ellip. Ht: **1052.168sft** Geoid18

Iowa North Zone (1401) Northing: **3729827.476sft** Easting: **4826406.092sft**
Mapping Angle: **-0°14'21.3"** Combination Scale Factor: **0.9998956974**

IaRCS Zone 4 Northing: **8673757.035sft** Easting: **14763403.760sft**
Mapping Angle: **0°39'45.8"** Combination Scale Factor: **1.0000006723**

Monument Type: 5/8" diameter aluminum rod with a 2-1/2" dia. aluminum cap & permanent magnet encased in a 5" dia. PVC pipe with aluminum access cover.



This document was prepared by Dan Corbin, Inc. on May 25th, 2021 for Wright County, Iowa.