

Wright County, Iowa
Horizontal Datum: **NAD 83(NA2011)** - Vertical Datum: **NAVD 1988**
Iowa State Plane North Zone (1401)
Iowa Regional Coordinate System, Zone 4, Sioux City – Iowa Falls
Units: US Survey Feet
05/27/2020

Point Name: **990035**

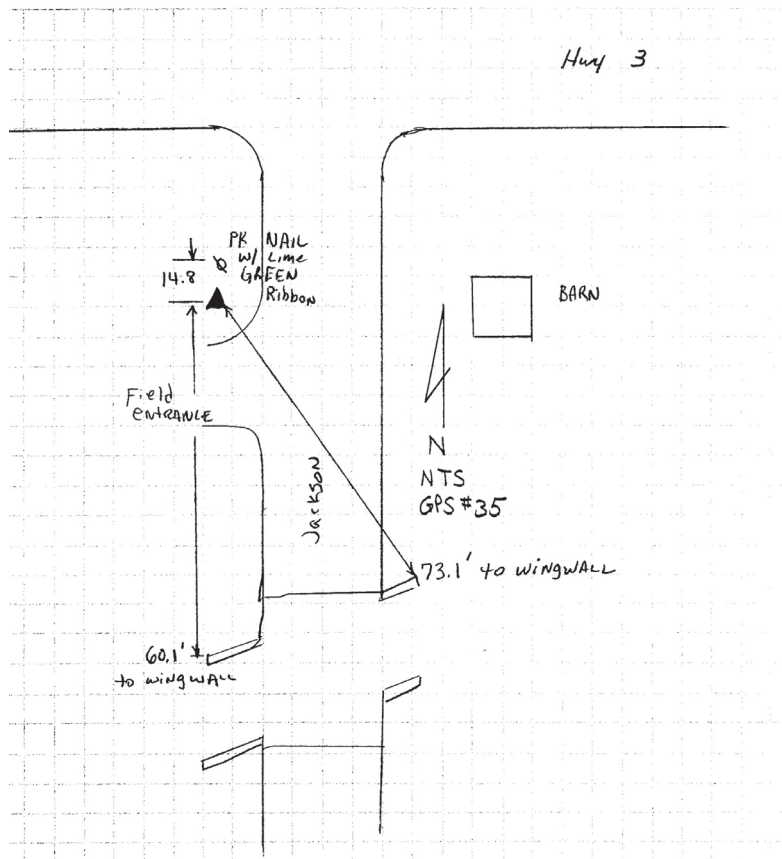
Designation: Wright County 0035 (set by V&K in 2004)

NAD 83(NA2011) Latitude: **N42°43'50.64758"** Longitude: **W93°47'39.71553"**
NAVD 88 Ortho Height: **1124.723sft** Ellip. Ht: **1033.539sft** Geoid18

Iowa North Zone (1401) Northing: **3729480.712sft** Easting: **4842162.114sft**
Mapping Angle: **-0°11'58.2"** Combination Scale Factor: **0.9998965726**

IaRCS Zone 4 Northing: **8673658.315sft** Easting: **14779164.944sft**
Mapping Angle: **0°42'08.5"** Combination Scale Factor: **1.0000015155**

Monument Type: 5/8" diameter aluminum rod with a 2-1/2" dia. aluminum cap & permanent magnet encased in a 5" dia. PVC pipe with aluminum access cover.



This document was prepared by Dan Corbin, Inc. on May 25th, 2021 for Wright County, Iowa.