

Wright County, Iowa

Horizontal Datum: **NAD 83(NA2011)** - Vertical Datum: **NAVD 1988**
Iowa State Plane North Zone (1401)
Iowa Regional Coordinate System, Zone 4, Sioux City – Iowa Falls
Units: US Survey Feet
05/27/2020

Point Name: **990036**

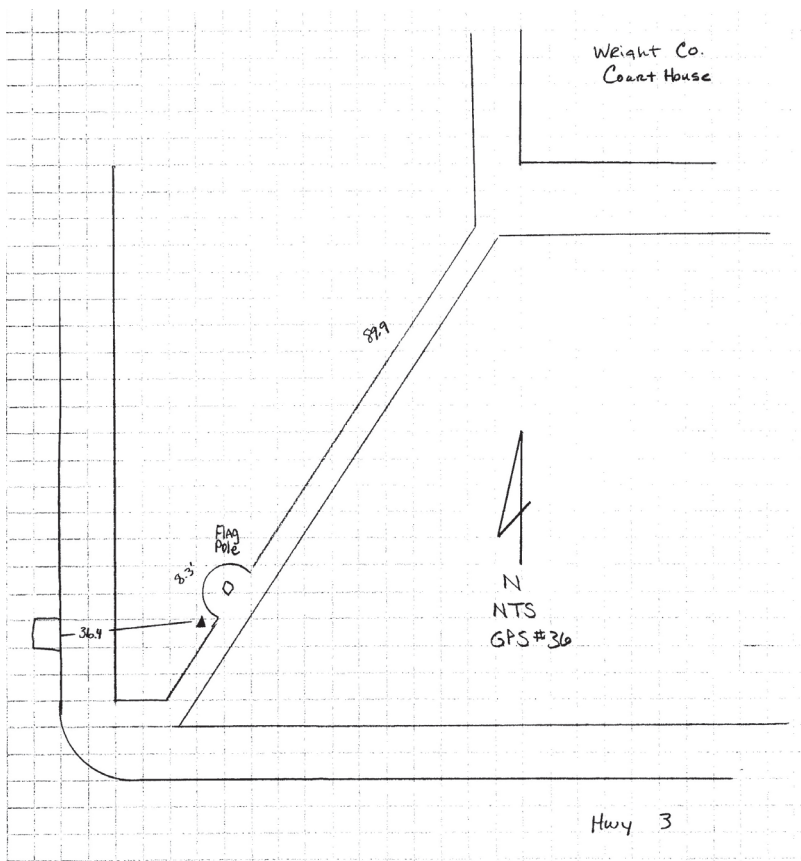
Designation: Wright County 0036 (set by V&K in 2004)

NAD 83(NA2011) Latitude: **N42°43'54.48257"** Longitude: **W93°43'57.28724"**
NAVD 88 Ortho Height: **1180.800sft** Ellip. Ht: **1090.310sft** Geoid18

Iowa North Zone (1401) Northing: **3729817.204sft** Easting: **4858763.234sft**
Mapping Angle: **-0°09'27.5"** Combination Scale Factor: **0.9998938799**

IaRCS Zone 4 Northing: **8674256.112sft** Easting: **14795760.453sft**
Mapping Angle: **0°44'38.9"** Combination Scale Factor: **0.9999988660**

Monument Type: 5/8" diameter aluminum rod with a 2-1/2" dia. aluminum cap & permanent magnet encased in a 5" dia. PVC pipe with aluminum access cover.



This document was prepared by Dan Corbin, Inc. on May 25th, 2021 for Wright County, Iowa.