

**Wright County, Iowa**  
Horizontal Datum: **NAD 83(NA2011)** - Vertical Datum: **NAVD 1988**  
Iowa State Plane North Zone (1401)  
Iowa Regional Coordinate System, Zone 4, Sioux City – Iowa Falls  
Units: US Survey Feet  
**05/27/2020**

Point Name: **990037**

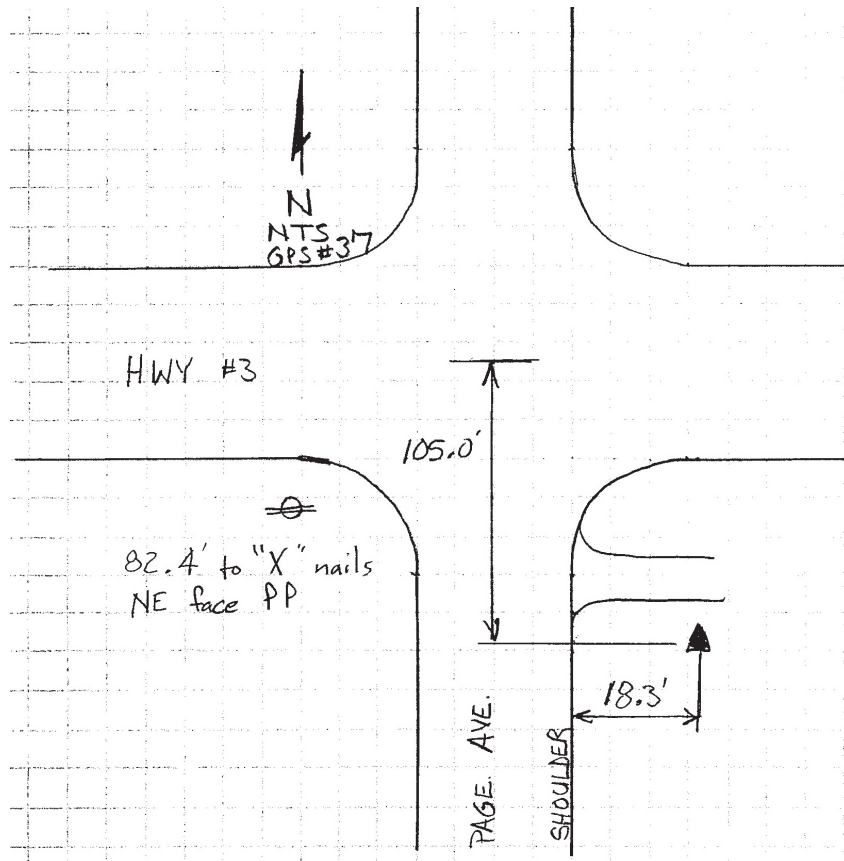
**Designation:** Wright County 0037 (set by V&K in 2004)

NAD 83(NA2011) Latitude: **N42°43'53.37288"** Longitude: **W93°40'33.57999"**  
NAVD 88 Ortho Height: **1236.913sft** Ellip. Ht: **1146.923sft** Geoid18

**Iowa North Zone (1401)** Northing: **3729668.129sft** Easting: **4873965.651sft**  
Mapping Angle: **-0°07'09.4"** Combination Scale Factor: **0.9998911682**

**IaRCS Zone 4** Northing: **8674346.309sft** Easting: **14810964.930sft**  
Mapping Angle: **0°46'56.6"** Combination Scale Factor: **0.9999961414**

**Monument Type:** 5/8" diameter aluminum rod with a 2-1/2" dia. aluminum cap & permanent magnet encased in a 5" dia. PVC pipe with aluminum access cover.



*This document was prepared by Dan Corbin, Inc. on May 25<sup>th</sup>, 2021 for Wright County, Iowa.*