

Wright County, Iowa
 Horizontal Datum: **NAD 83(NA2011)** - Vertical Datum: **NAVD 1988**
 Iowa State Plane North Zone (1401)
 Iowa Regional Coordinate System, Zone 4, Sioux City – Iowa Falls
 Units: US Survey Feet
05/27/2020

Point Name: **990038**

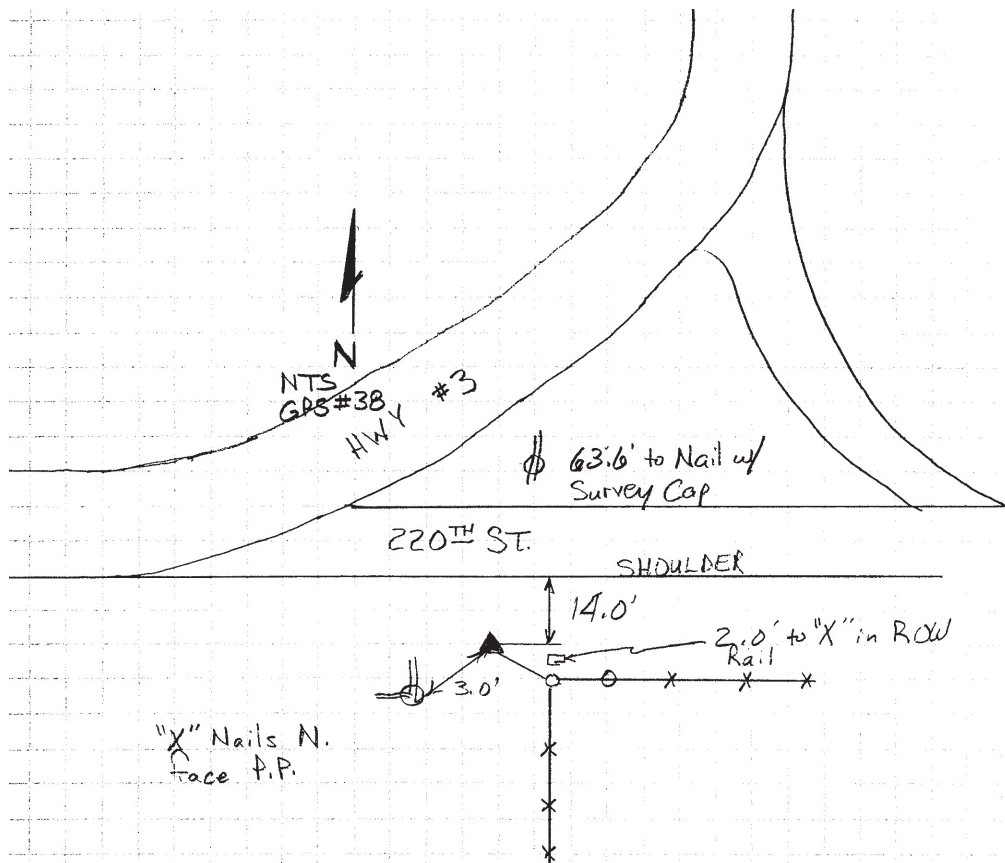
Designation: Wright County 0038 (set by V&K in 2004)

NAD 83(NA2011) Latitude: **N42°43'52.50498"** Longitude: **W93°37'02.44141"**
 NAVD 88 Ortho Height: **1219.895sft** Ellip. Ht: **1130.199sft** Geoid18

Iowa North Zone (1401) Northing: **3729552.930sft** Easting: **4889722.880sft**
 Mapping Angle: **-0°04'46.3"** Combination Scale Factor: **0.9998919628**

IaRCS Zone 4 Northing: **8674479.085sft** Easting: **14826723.675sft**
 Mapping Angle: **0°49'19.3"** Combination Scale Factor: **0.9999969263**

Monument Type: 5/8" diameter aluminum rod with a 2-1/2" dia. aluminum cap & permanent magnet encased in a 5" dia. PVC pipe with aluminum access cover.



This document was prepared by Dan Corbin, Inc. on May 25th, 2021 for Wright County, Iowa.