

Wright County, Iowa
Horizontal Datum: **NAD 83(NA2011)** - Vertical Datum: **NAVD 1988**
Iowa State Plane North Zone (1401)
Iowa Regional Coordinate System, Zone 4, Sioux City – Iowa Falls
Units: US Survey Feet
05/27/2020

Point Name: **990040**

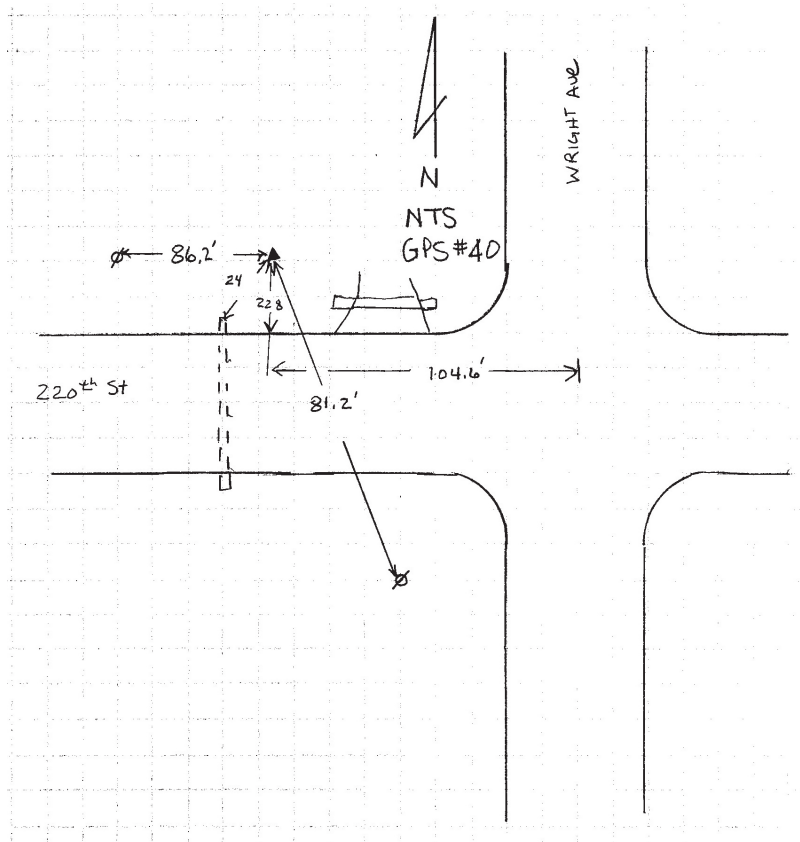
Designation: Wright County 0040 (set by V&K in 2004)

NAD 83(NA2011) Latitude: **N42°43'53.02842"** Longitude: **W93°29'57.26343"**
NAVD 88 Ortho Height: **1228.715sft** Ellip. Ht: **1138.801sft** Geoid18

Iowa North Zone (1401) Northing: **3729584.040sft** Easting: **4921454.232sft**
Mapping Angle: **0°00'01.9"** Combination Scale Factor: **0.9998915545**

IaRCS Zone 4 Northing: **8675009.469sft** Easting: **14858453.940sft**
Mapping Angle: **0°54'06.7"** Combination Scale Factor: **0.9999965238**

Monument Type: 5/8" diameter aluminum rod with a 2-1/2" dia. aluminum cap & permanent magnet encased in a 5" dia. PVC pipe with aluminum access cover.



This document was prepared by Dan Corbin, Inc. on May 25th, 2021 for Wright County, Iowa.