

Wright County, Iowa
Horizontal Datum: **NAD 83(NA2011)** - Vertical Datum: **NAVD 1988**
Iowa State Plane North Zone (1401)
Iowa Regional Coordinate System, Zone 4, Sioux City – Iowa Falls
Units: US Survey Feet
05/27/2020

Point Name: **990043**

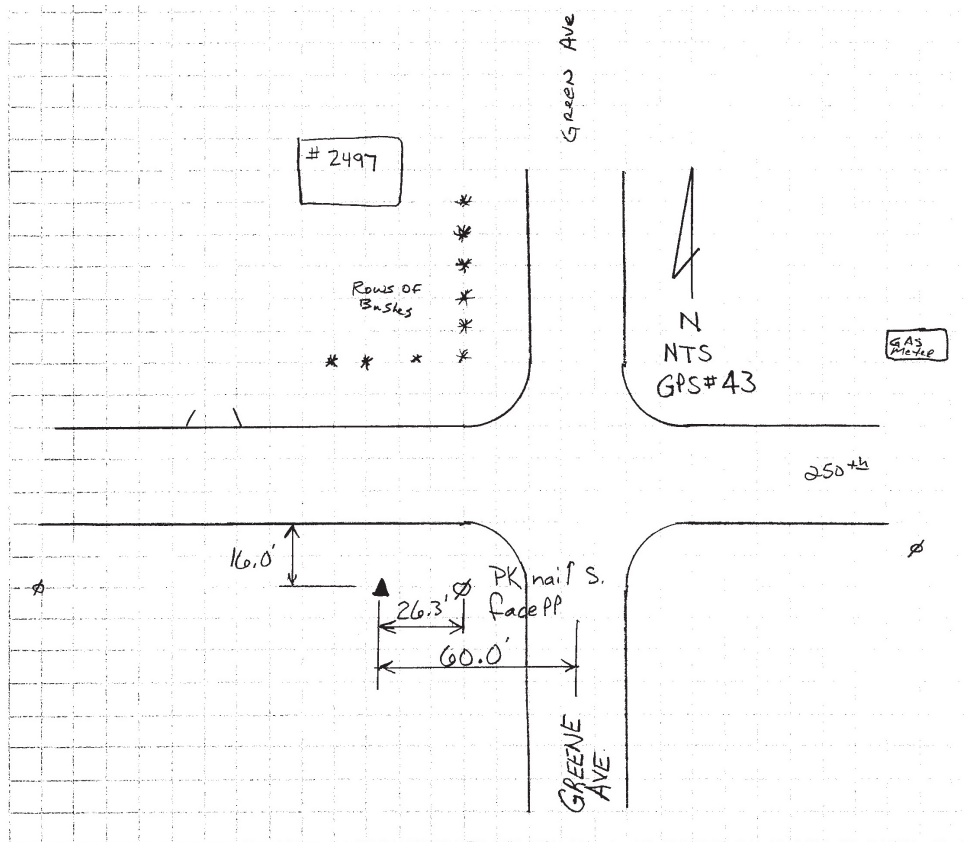
Designation: Wright County 0043 (set by V&K in 2004)

NAD 83(NA2011) Latitude: **N42°41'16.32081"** Longitude: **W93°51'12.01778"**
NAVD 88 Ortho Height: **1130.561sft** Ellip. Ht: **1039.561sft** Geoid18

Iowa North Zone (1401) Northing: **3713918.601sft** Easting: **4826252.521sft**
Mapping Angle: **-0°14'22.1"** Combination Scale Factor: **0.9998957425**

IaRCS Zone 4 Northing: **8657846.057sft** Easting: **14763500.651sft**
Mapping Angle: **0°39'45.0"** Combination Scale Factor: **0.9999989346**

Monument Type: 5/8" diameter aluminum rod with a 2-1/2" dia. aluminum cap & permanent magnet encased in a 5" dia. PVC pipe with aluminum access cover.



This document was prepared by Dan Corbin, Inc. on May 25th, 2021 for Wright County, Iowa.