

**Wright County, Iowa**  
Horizontal Datum: **NAD 83(NA2011)** - Vertical Datum: **NAVD 1988**  
Iowa State Plane North Zone (1401)  
Iowa Regional Coordinate System, Zone 4, Sioux City – Iowa Falls  
Units: US Survey Feet  
**05/27/2020**

Point Name: **990055**

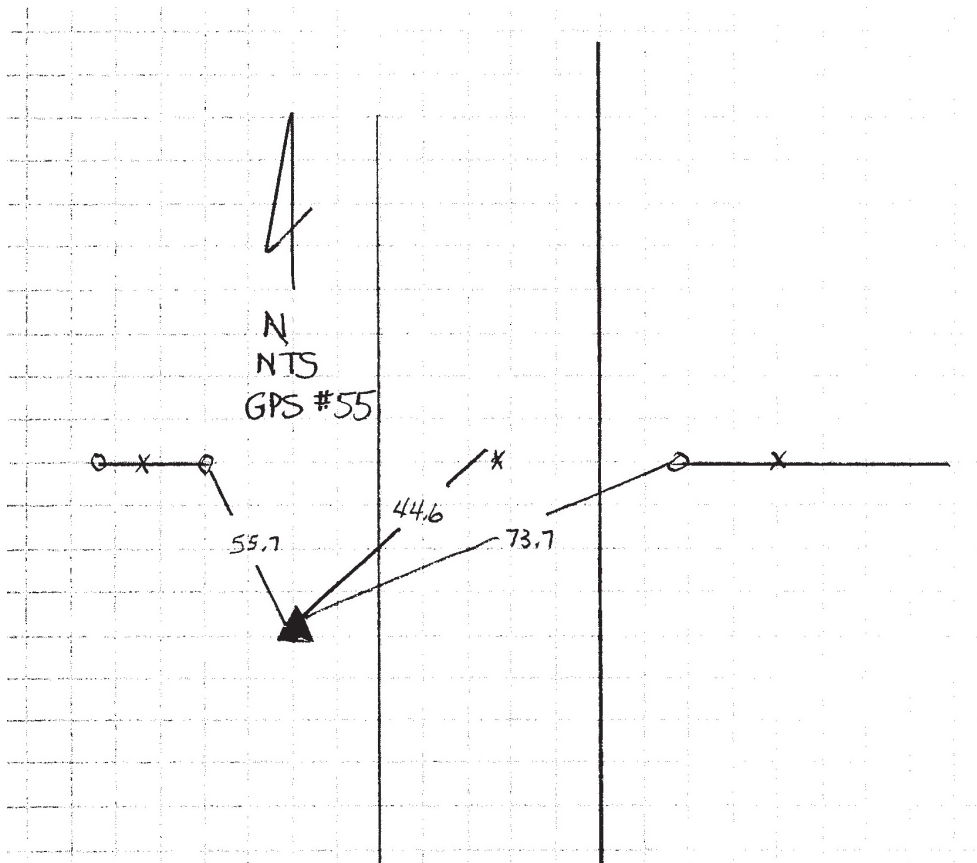
**Designation:** Wright County 0055 (set by V&K in 2004)

NAD 83(NA2011) Latitude: **N42°38'40.35416"** Longitude: **W93°37'02.60044"**  
NAVD 88 Ortho Height: **1228.375sft** Ellip. Ht: **1139.473sft** Geoid18

**Iowa North Zone (1401)** Northing: **3697953.174sft** Easting: **4889667.133sft**  
Mapping Angle: **-0°04'46.4"** Combination Scale Factor: **0.9998909859**

**IaRCS Zone 4** Northing: **8642879.102sft** Easting: **14827165.188sft**  
Mapping Angle: **0°49'19.2"** Combination Scale Factor: **0.9999924096**

**Monument Type:** 5/8" diameter aluminum rod with a 2-1/2" dia. aluminum cap & permanent magnet encased in a 5" dia. PVC pipe with aluminum access cover.



*This document was prepared by Dan Corbin, Inc. on May 25<sup>th</sup>, 2021 for Wright County, Iowa.*